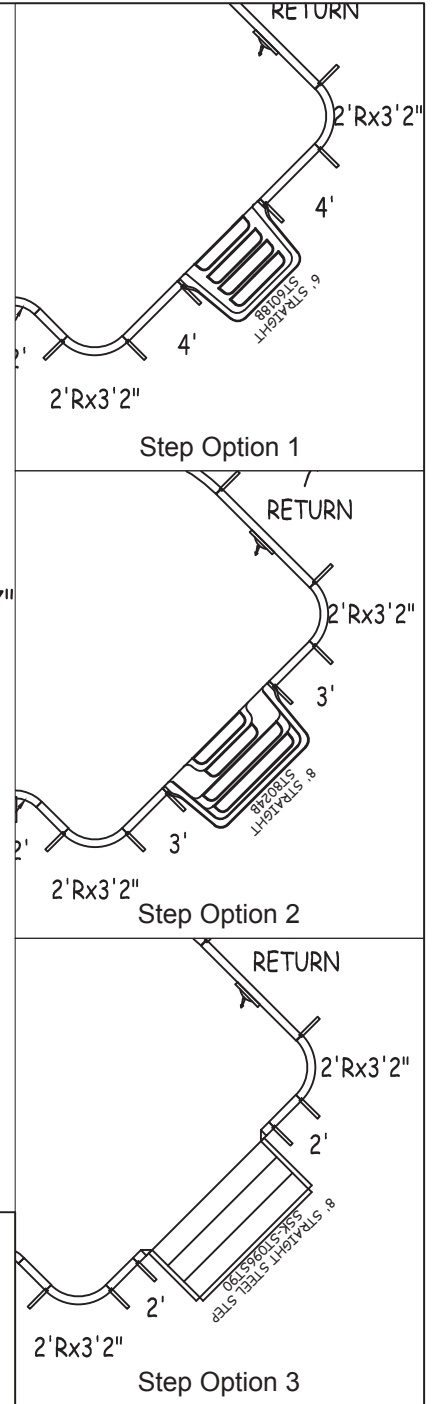
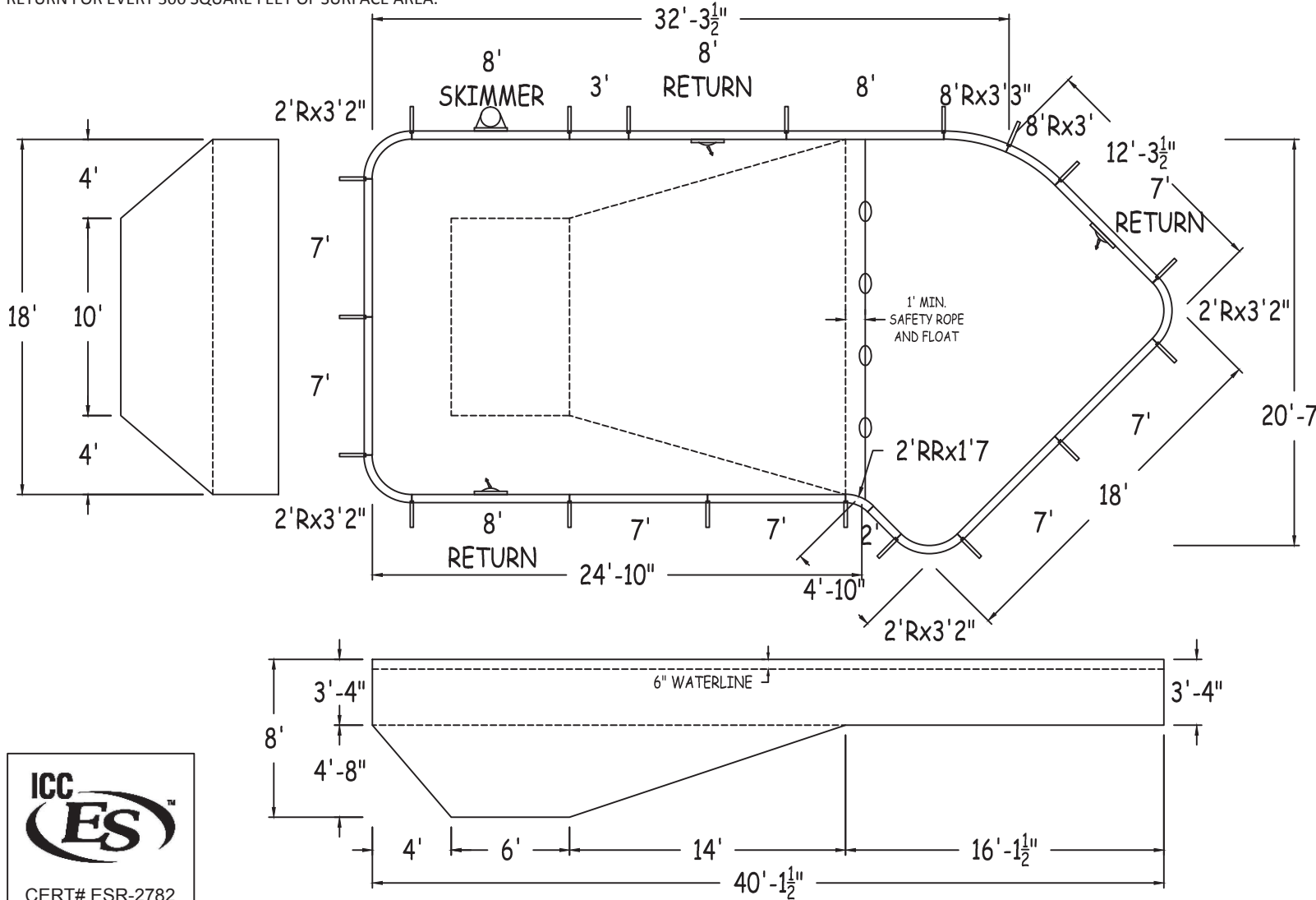


IN ACCORDANCE WITH ANSI/APSP/ICC-5 2011, THE INSTALLER IS RESPONSIBLE FOR PLACING ONE SKIMMER FOR EVERY 800 SQUARE FEET OF SURFACE AREA AND ONE RETURN FOR EVERY 300 SQUARE FEET OF SURFACE AREA.



LATHAM STEEL		LAZY-L-2FT RAD 18-0 x 20-7 x 40-2 LEFT			
42" STEEL PANELS	PERIMETER:	106'-6"	VOLUME (US Gal):	21800	
DWG#:	SURFACE (ft²):	663	VOLUME (Liters):	82500	
LSSL24S1840L15	LINER (ft²):	668	DATE:	1/1/2015	DSR: 138
KIT#:	COVER (ft²):	782	SCALE:	1/8" = 1'-0"	



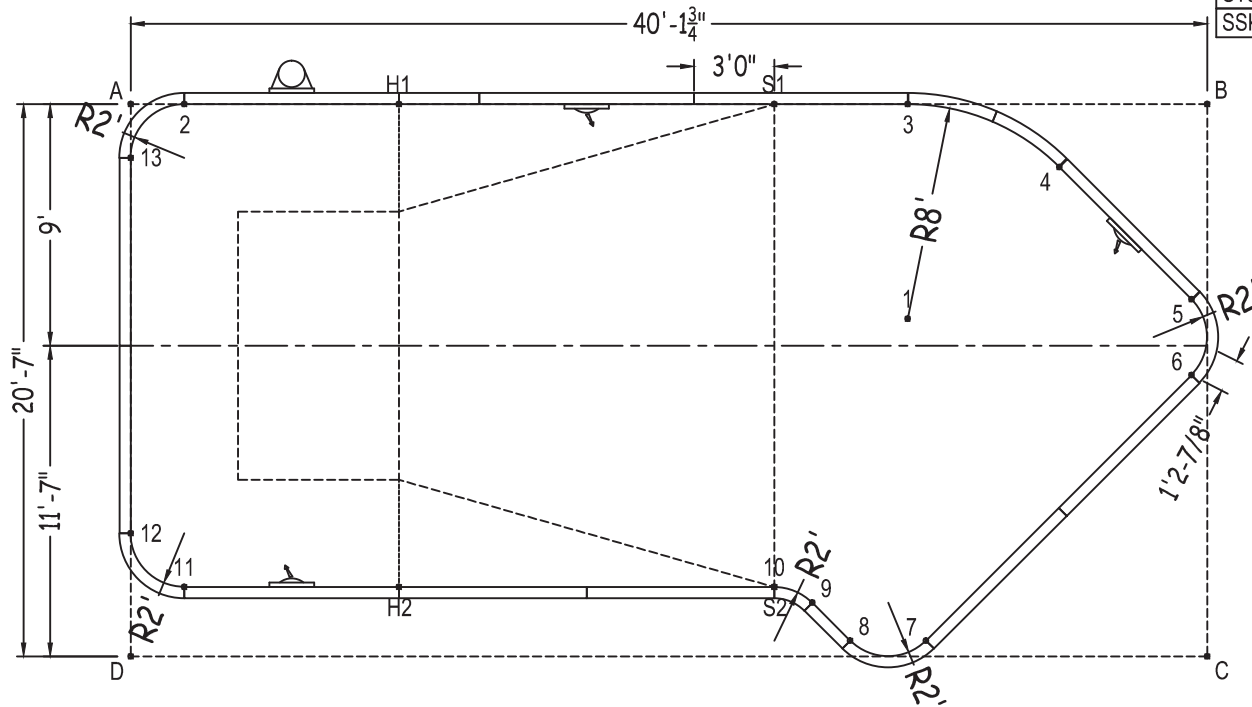
DIVING/SLIDING EQUIPMENT SHALL BE DESIGNED FOR SWIMMING POOLS AND SHALL BE INSTALLED IN ACCORDANCE WITH THE DIVING/SLIDING EQUIPMENT MANUFACTURER'S SPECIFICATIONS. PLEASE CONTACT THE DIVING/SLIDING EQUIPMENT MANUFACTURER FOR THEIR SPECIFICATIONS.

MEETS DEPTH AND SHAPE MINIMUM STANDARD ANSI/APSP/ICC-5 2011

LAZY-L-2FT RAD

Diagonals	3 To 7	20'- 1/4"	4 To 13	34'-7 1/2"	6 To 13	40'-4 1/2"	9 To 13	30'-4 1/4"	
2 To 3	26'-11 3/4"	3 To 8	20'-1 1/4"	5 To 6	2'-10"	7 To 8	2'-10"	10To11	22'-0"
2 To 4	32'-8 1/2"	3 To 9	18'-11"	5 To 7	16'-1 1/2"	7 To 9	4'-5 3/4"	10To12	24'-1"
2 To 5	38'-3"	3 To 10	18'-8"	5 To 8	18'-0"	7 To 10	6'-0"	10To13	28'-10 1/4"
2 To 6	38'-10 3/4"	3 To 11	32'-5"	5 To 9	18'-1 1/4"	7 To 11	27'-8 3/4"	11To12	2'-10"
2 To 7	34'-1 1/2"	3 To 12	33'-1 1/4"	5 To 10	18'-10 3/4"	7 To 12	29'-11"	11To13	16'-1 1/2"
2 To 8	31'-10 1/2"	3 To 13	29'- 1/2"	5 To 11	39'- 3/4"	7 To 13	34'-8 1/4"	12To13	14'-0"
2 To 9	29'-10 3/4"	4 To 5	6'-11 3/4"	5 To 12	40'-6"	8 To 9	2'-0"		
2 To 10	28'-5"	4 To 6	9'-2 1/4"	5 To 13	39'-10 3/4"	8 To 10	3'-5 1/2"		
2 To 11	18'-0"	4 To 7	18'-4"	6 To 7	14'-0"	8 To 11	24'-11"		
2 To 12	16'-1 1/2"	4 To 8	19'-3 3/4"	6 To 8	16'-1 1/2"	8 To 12	27'-1 1/2"		
2 To 13	2'-10"	4 To 9	18'-8"	6 To 9	16'-6"	8 To 13	32'-3 3/4"		
3 To 4	6'-1 1/2"	4 To 10	18'-11"	6 To 10	17'-5 1/4"	9 To 10	1'-6 1/4"		
3 To 5	12'-10"	4 To 11	36'-2 1/4"	6 To 11	38'-4 1/2"	9 To 11	23'-5"		
3 To 6	14'-7 1/2"	4 To 12	37'-2 3/4"	6 To 12	40'-0"	9 To 12	25'-6 1/2"		

Part number	Description	Base	Option 1	Option 2	Option 3
		QTY	QTY	QTY	QTY
ST0960002X	8'	1	2	2	2
ST0960002*	8' SKIMMER	1	1	1	1
ST0960002*	8' RETURN	2	2	2	2
ST0840002X	7'	6	2	2	2
ST0840002*	7' RETURN	1	1	1	1
ST0720001X	6'	-	1	1	1
ST0480001X	4'	-	2	-	-
ST0360000X	3'	1	1	3	1
ST0240000X	2'	1	1	1	3
RA0390960X	8Rx3'3"	1	1	1	1
RA0360960X	8Rx3'	1	1	1	1
CN0380241X	2Rx3'2"	4	4	4	4
CR0190240X	2RRx1'7"	1	1	1	1
SSC-TRST1207	12" Straight Transition	-	-	-	2
Brace	Brace	19	20	20	20
IPC-STKPK25	REBAR STAKE 18" 25PC	2	2	2	2
IPC-HDWSTRT150	BOLT STR 3/8-16X1" C/W NUT 150PC	2	2	2	2
ST6018B	THKSHT STEP STR 6'	-	1	-	-
ST8024B	THKSHT STEP STR SIT N STEP 8'	-	-	1	-
SSK-ST096ST90	STEEL STEP STR-90D 3 TRD 8'	-	-	-	1



	A	B	C	D
1	30'- 3/4"	13'-9"	16'-10"	31'-7"
2	2'-0"	38'-1 3/4"	43'-4"	20'-8 1/4"
3	28'-11 3/4"	11'-2"	23'-5"	35'-6 1/2"
4	34'-8 1/2"	6'-0"	19'- 3/4"	39'-1 3/4"
5	40'-2 3/4"	7'-3 1/2"	13'-4"	41'-8 3/4"
6	40'-10"	10'-1 1/2"	10'-6"	40'-11"
7	35'-9 1/4"	22'-7"	10'-6"	29'-8"
8	33'-5 1/2"	24'- 1/4"	13'-4"	26'-10"
9	31'-5 3/4"	23'-8 1/2"	14'-10 1/4"	25'-6"
10	30'-0"	24'-2 1/4"	16'-4 1/4"	24'-1 3/4"
11	18'-1 1/4"	42'-2"	38'-2 3/4"	3'-3 1/4"
12	16'-0"	43'-2 1/2"	40'-4 3/4"	4'-7"
13	2'-0"	40'-2 1/4"	44'-2 3/4"	18'-7"
S2	30'-0"	24'-2 1/4"	16'-4 1/4"	24'-1 3/4"
S1	24'-0"	16'-1 3/4"	26'-2"	31'-7 1/2"
H2	20'-7"	35'-1 1/4"	30'-3"	10'-4"
H1	10'-0"	30'-1 3/4"	36'-6"	22'-10 3/4"
A	-	40'-1 3/4"	45'-1 1/4"	20'-7"

LAZY-L-2FT RAD 18-0 X 20-7 X 40-2 LEFT

DWG #: LSL24S1840L15

DATE: 1/1/2015

SHEET: 2 OF 2