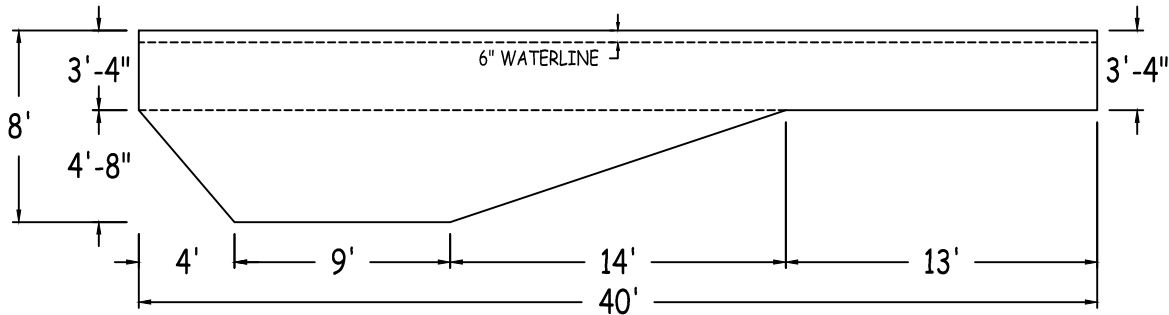
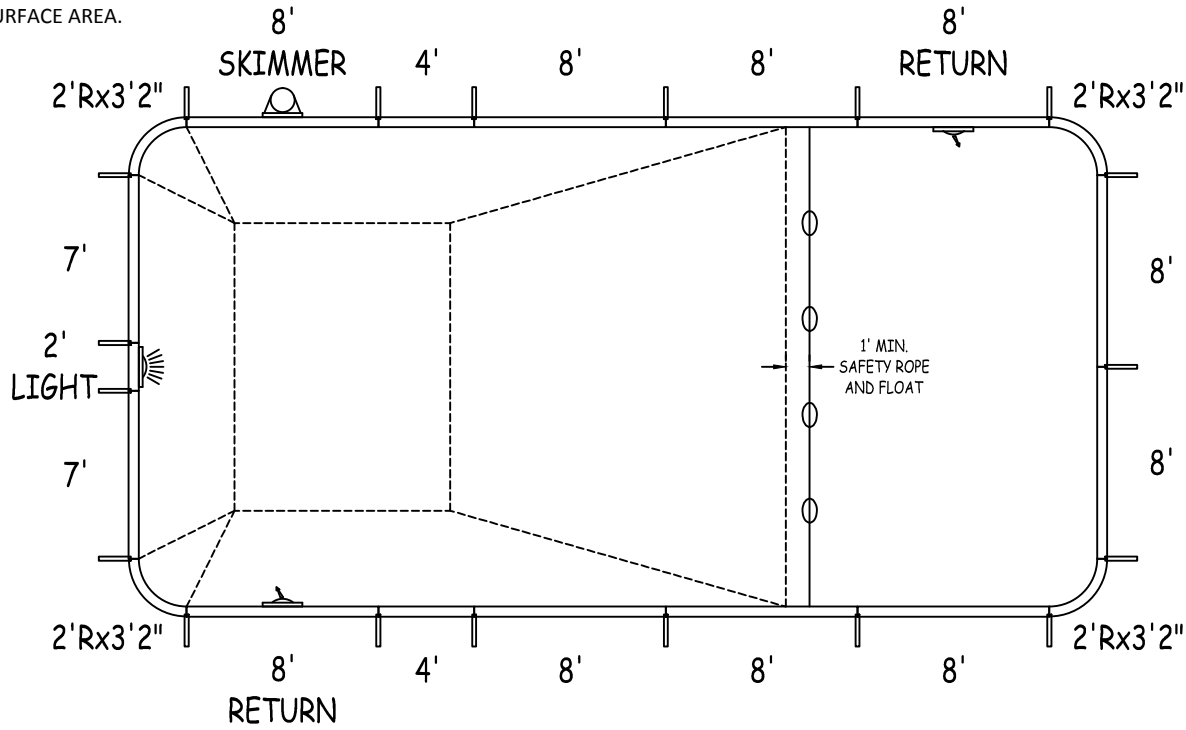
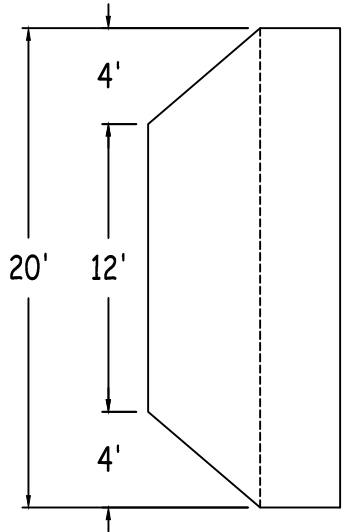


IN ACCORDANCE WITH ANSI/APSP/ICC-5 2011, THE INSTALLER IS RESPONSIBLE FOR PLACING ONE SKIMMER FOR EVERY 800 SQUARE FEET OF SURFACE AREA AND ONE RETURN FOR EVERY 300 SQUARE FEET OF SURFACE AREA.



UNIVERSAL STEEL

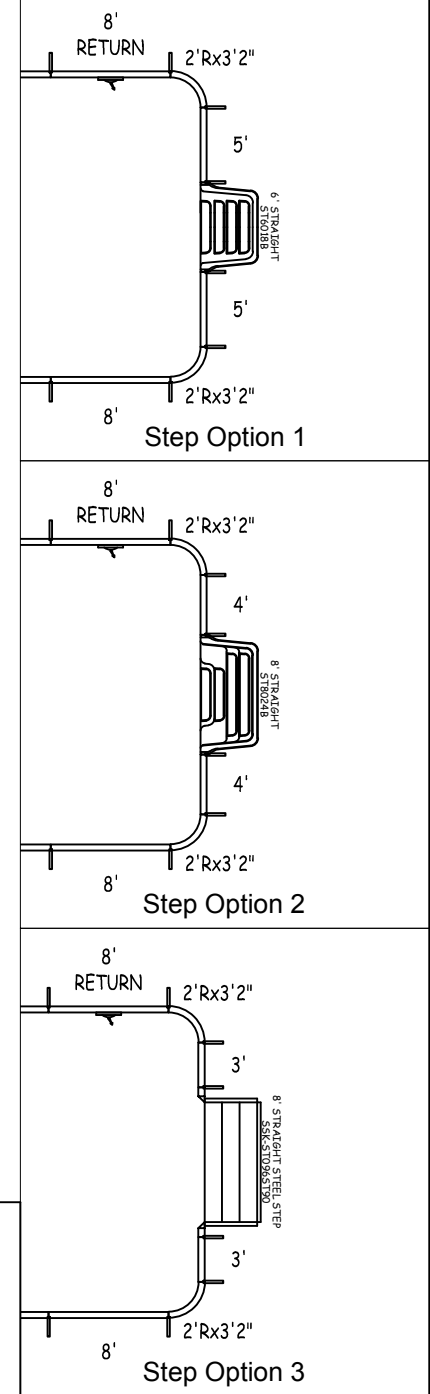
RECTANGLE-2FT RAD 20-0 X 40-0

42" STEEL PANELS	PERIMETER:	116'7"	VOLUME (US Gal):	26200	
DWG#:	SURFACE (ft²):	797	VOLUME (Liters):	99200	
USRE24S2040-13L	LINER (ft²):	800	DATE:	1/1/2013	
			DSR:	76	
KIT#:	RE24S2040	COVER (ft²):	924	SCALE:	1/8" = 1'-0"



DIVING/SLIDING EQUIPMENT SHALL BE DESIGNED FOR SWIMMING POOLS AND SHALL BE INSTALLED IN ACCORDANCE WITH THE DIVING/SLIDING EQUIPMENT MANUFACTURER'S SPECIFICATIONS. PLEASE CONTACT THE DIVING/SLIDING EQUIPMENT MANUFACTURER FOR THEIR SPECIFICATIONS.

MEETS DEPTH AND SHAPE MINIMUM STANDARD ANSI/APSP/ICC-5 2011

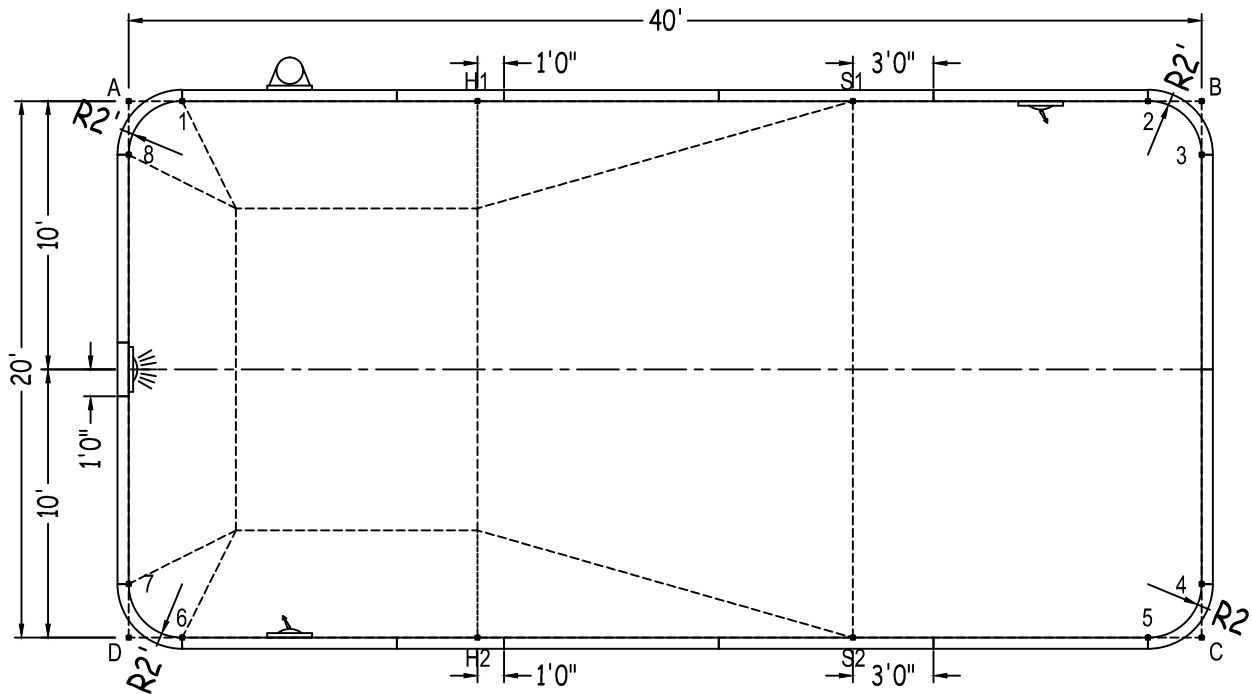


RECTANGLE-2FT RAD

Diagonals		
1 To 2	36'0"	3 To 5 18'-1 1/4"
1 To 3	38'- 3/4"	3 To 6 42'- 1/2"
1 To 4	42'- 1/2"	3 To 7 43'-1"
1 To 5	41'-2 1/4"	3 To 8 40'0"
1 To 6	20'0"	4 To 5 2'-10"
1 To 7	18'-1 1/4"	4 To 6 38'- 3/4"
1 To 8	2'-10"	4 To 7 40'0"
2 To 3	2'-10"	4 To 8 43'-1"
2 To 4	18'-1 1/4"	5 To 6 36'0"
2 To 5	20'0"	5 To 7 38'- 3/4"
2 To 6	41'-2 1/4"	5 To 8 42'- 1/2"
2 To 7	42'- 1/2"	6 To 7 2'-10"
2 To 8	38'- 3/4"	6 To 8 18'-1 1/4"
3 To 4	16'0"	7 To 8 16'0"

Part number	Description	Base	Option 1	Option 2	Option 3
		QTY	QTY	QTY	QTY
ST0960002X	8'	7	5	5	5
ST0960002*	8' SKIMMER	1	1	1	1
ST0960002*	8' RETURN	2	2	2	2
ST0840002X	7'	2	2	2	2
ST0600001X	5'	-	2	-	-
ST0480001X	4'	2	2	4	2
ST0360000X	3'	-	-	-	2
ST0240000*	2' LIGHT	1	1	1	1
CN0380241X	2'Rx3'2"	4	4	4	4
SSC-TRST1207	12" Straight Transition	-	-	-	2
Brace**	Brace	19	20	20	20
IPC-STKPK25	REBAR STAKE 18" 25PC	2	2	2	2
IPC-HDWSTRT150	BOLT STR 3/8-16X1" C/W NUT 150PC	2	2	2	2
ST6018B	THKSHT STEP STR 6'	-	1	-	-
ST8024B	THKSHT STEP STR SIT N STEP 8'	-	-	1	-
SSK-ST096ST90	STEEL STEP STR-90D 3 TRD 8'	-	-	-	1

** RECOMMENDED BRACE: Generic (XXX-XXX)



	A	B	C	D
1	2'0"	38'0"	42'-11 1/4"	20'-1 1/4"
2	38'0"	2'0"	20'-1 1/4"	42'-11 1/4"
3	40'- 1/2"	2'0"	18'0"	43'-10 1/4"
4	43'-10 1/4"	18'0"	2'0"	40'- 1/2"
5	42'-11 1/4"	20'-1 1/4"	2'0"	38'0"
6	20'-1 1/4"	42'-11 1/4"	38'0"	2'0"
7	18'0"	43'-10 1/4"	40'- 1/2"	2'0"
8	2'0"	40'- 1/2"	43'-10 1/4"	18'0"
S2	33'-7 1/4"	23'-10 1/4"	13'0"	27'0"
S1	27'0"	13'0"	23'-10 1/4"	33'-7 1/4"
H2	23'-10 1/4"	33'-7 1/4"	27'0"	13'0"
H1	13'0"	27'0"	33'-7 1/4"	23'-10 1/4"
A	-	40'0"	44'-8 3/4"	20'0"

QTY	PART #	DESCRIPTION
12	ST096000-1	8'-0" STRAIGHT
2	ST048000-1	4'-0" STRAIGHT
4	CN038024-1	3' 2" X 2' 0" RADIUS 90° CORNER
22	CLIP-1	COPING CLIP
2	COP-TSPK100	SCREW, TEK (100/BAG)
NOTE: SOME COPING PIECES MAY NEED TO BE TRIMMED TO LENGTH AS INDICATED		

