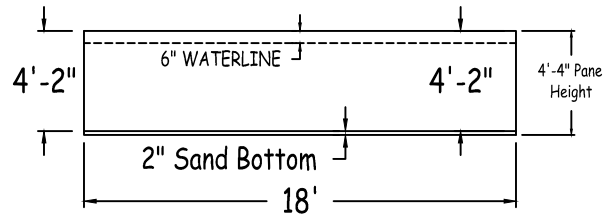
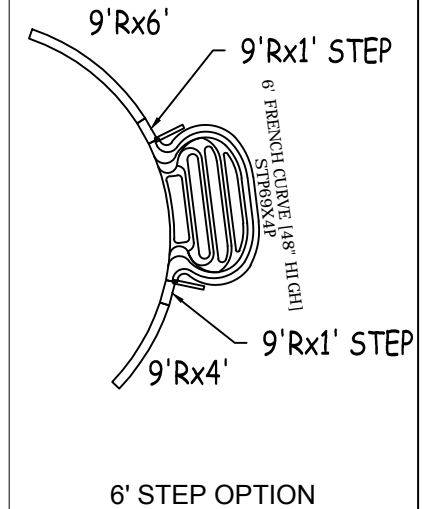
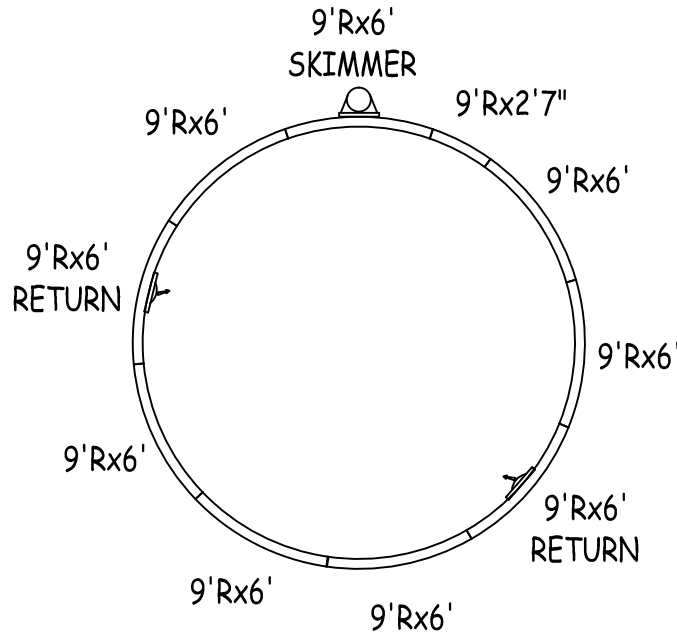
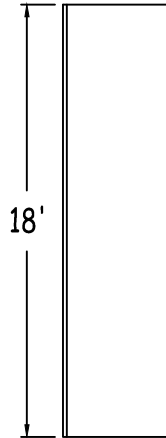
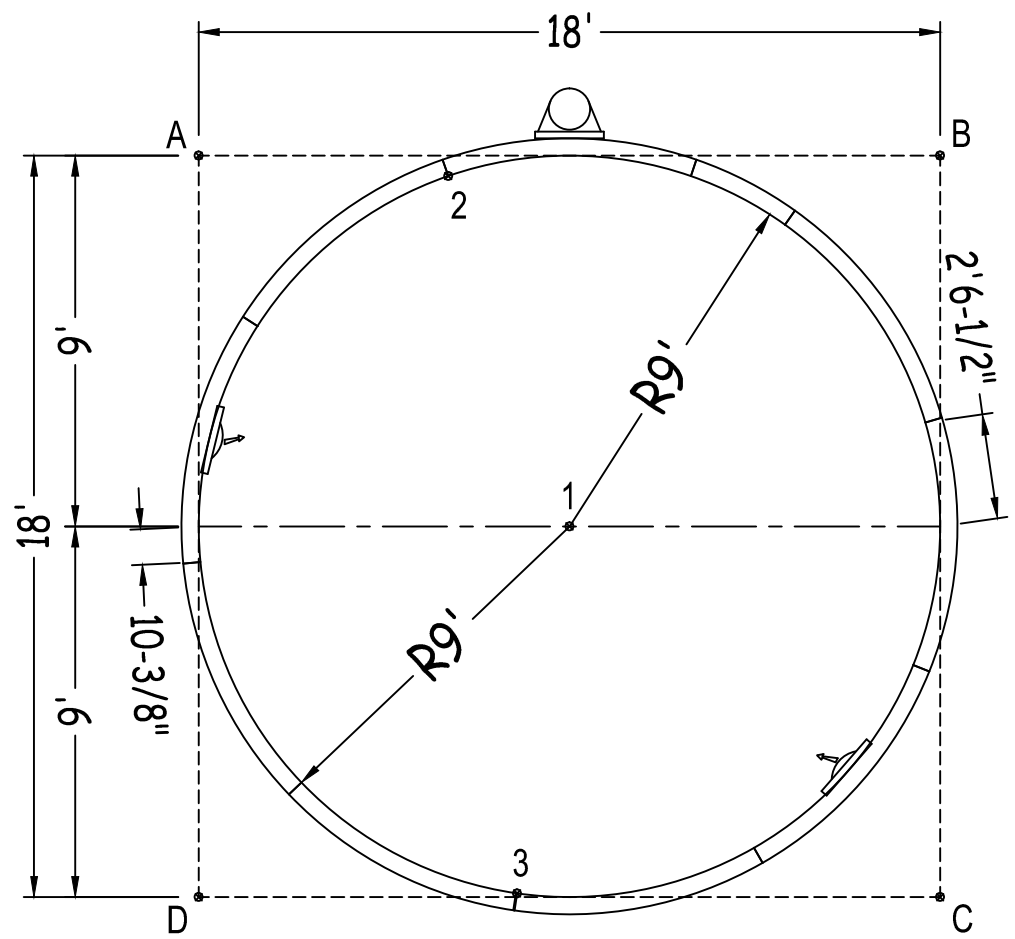


IN ACCORDANCE WITH ANSI/APSP/ICC-5 2011, THE INSTALLER IS RESPONSIBLE FOR PLACING ONE SKIMMER FOR EVERY 800 SQUARE FEET OF SURFACE AREA AND ONE RETURN FOR EVERY 300 SQUARE FEET OF SURFACE AREA.



		<b>ROUND 18-0 X 18-0</b>				<b>NON-DIVING POOL</b>		<b>WARNING!</b> FOR WARRANTY AND SAFETY PURPOSES: <i>Compression straps required</i> <i>(NOTE: 4 straps per panel, both sides of panel)</i> <i>Bolts must be used at every bolt hole location.</i>	
52" STEEL PANELS	PERIMETER:	56'-7"	VOLUME (US Gal):	7000		USE OF DIVING EQUIPMENT IS PROHIBITED			
DWG#:	SURFACE (ft²):	254	VOLUME (Liters):	26500		MEETS DEPTH AND SHAPE MINIMUM STANDARD ANSI/APSP/ICC-5 2011			
B5ROFBS1818-16	LINER (ft²):	254	DATE:	1/1/2016	DSR:	151			
KIT#:	ROFBS1818	COVER (ft²):	400	SCALE:	1/8" = 1'-0"				
								SHEET: 1 OF 2	

Diagonals
2 To 3   17'-6"



Part number	Description	Base		Option 1	
		QTY	QTY	QTY	QTY
RA0721080X	9'Rx6'		6		4
RA0721080*	9'Rx6' SKIMMER		1		1
RA0721080*	9'Rx6' RETURN		2		2
RA0481080X	9'Rx4'		-		1
RA0311080X	9'Rx2'7"		1		1
RA0121080S	9'Rx1' STEP		-		2
RA072102SC	6'0"X4" STEP CONNECTOR		-		1
Brace	Brace		-		2
IPC-BT52WCS-2	COMPRESSION STRAP 2PC		20		24
IPC-DRVSTK12G	BRACE COMP D-STK 3"X24" 90D 12G		-		2
IPC-STKPK25	REBAR STAKE 18" 25PC		1		1
IPC-HDWSTRT150	BOLT STR 3/8-16X1" C/W NUT 150PC		1		1
STP69X4P	ACRYLIC STEP FRENCH CURVE 6' (48")		-		1
CYW-RA096108-1	BT WHT, 8' 0" X 9' 0" RADIUS 1PC		6		0
CYW-RA055108-1	BT WHT, 4' 7" X 9' 0" RADIUS 1PC		1		0
CYW-RA048108-1	BT WHT, 4' 0" X 9' 0" RADIUS 1PC		1		0
CYW-CLIP-1	BT COPING, CLIP		10		0
COP-TSPK100	SCREW PACK, TEK #10 X 3/4 (100X1)		1		0
CYW-INSRT00PFT	BT COPING, WC TRK COVER PER FT		60		0

	A	B	C	D
1	12'-8 3/4"	12'-8 3/4"	12'-8 3/4"	12'-8 3/4"
2	6'-1"	11'-11 1/2"	21'-2 1/4"	18'-6 1/4"
3	19'-6"	20'-7 3/4"	10'-3 1/4"	7'-8 3/4"
A	-	18'-0"	25'-5 1/2"	18'-0"

ROUND 18-0 X 18-0

DWG #: B5ROFBS1818-16

DATE: 1/1/2016

SHEET: 2 OF 2