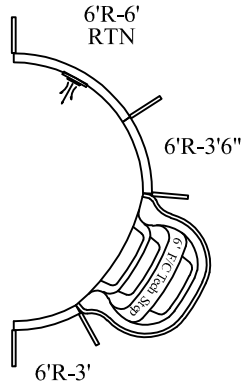
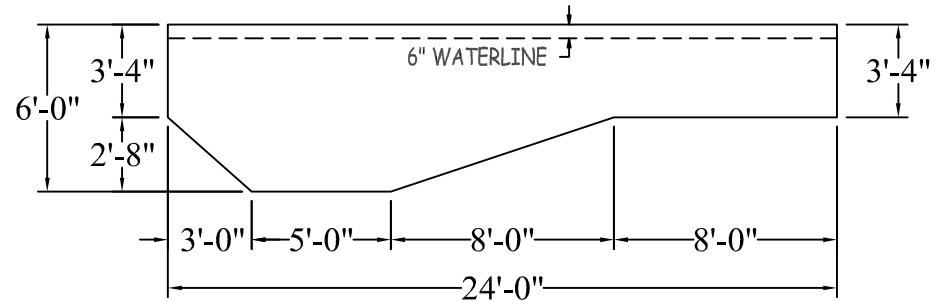
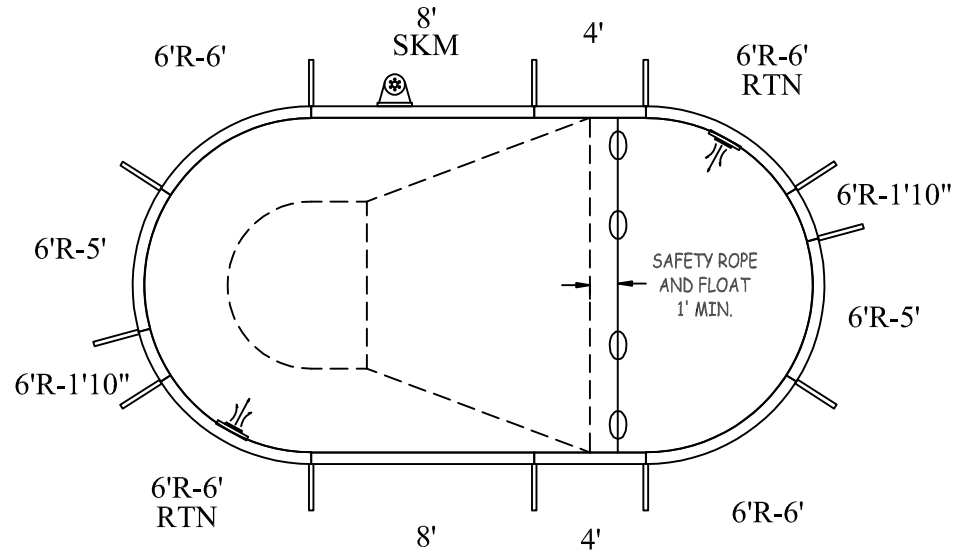
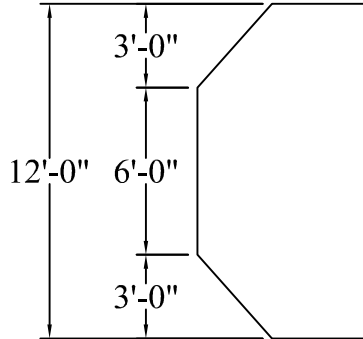
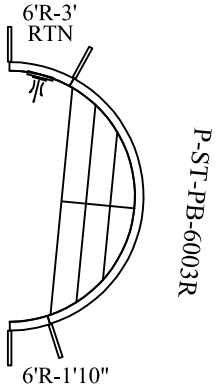


# STEP OPTIONS

## STEP OPTION 1



## STEP OPTION 2



# NON DIVING

# ATLAS SERIES

OVAL

12-0 X 24-0

DATE: 01/01/2020

REVISION:

SCALE: N.T.S.

APPROX. WATER VOLUME: 27 400 LITRES

PERIMETER: 61'-8" LIN.FT.

SURFACE (ft²): 257.0973

LINER (ft²): 288.0000

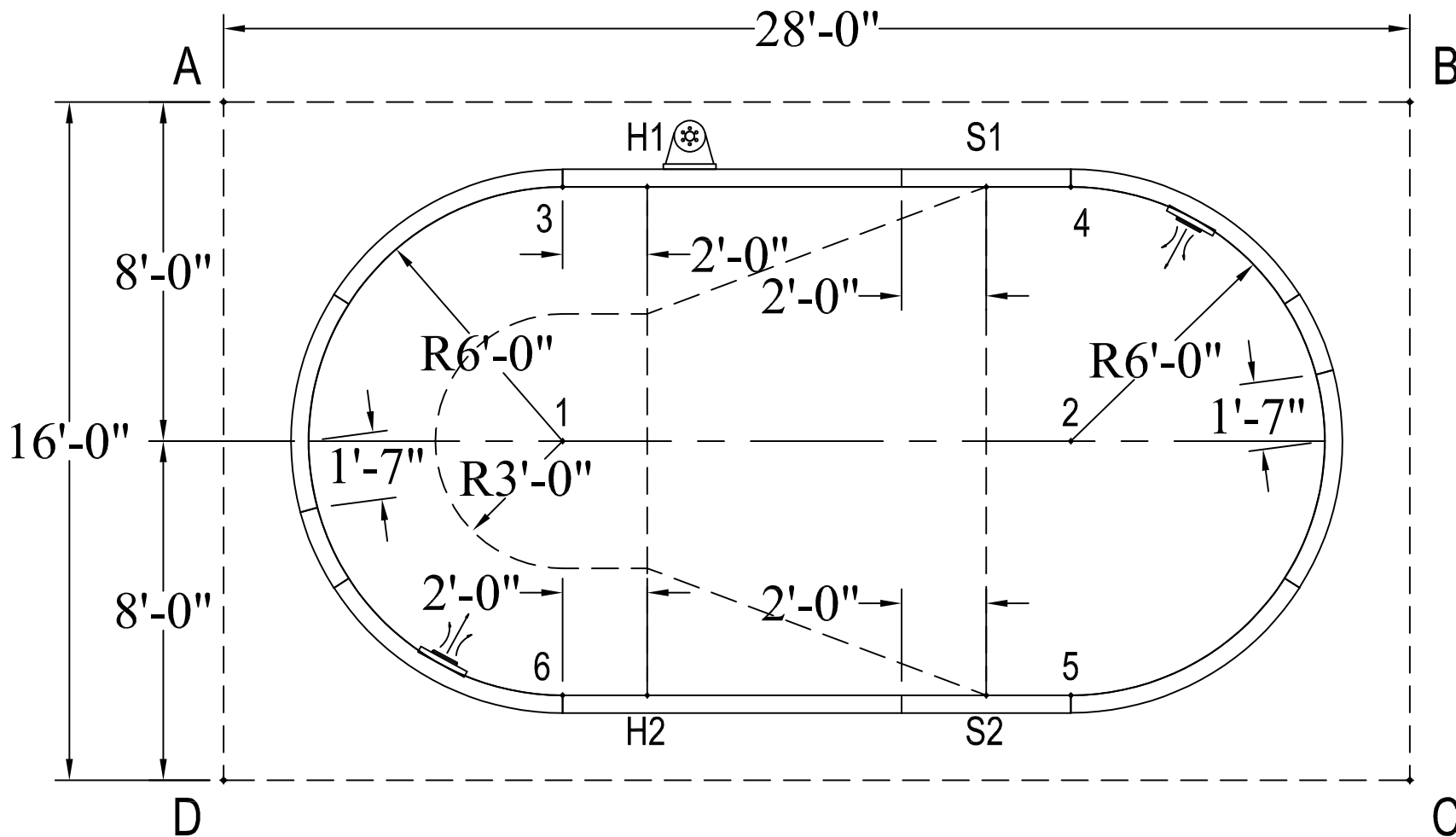
COVER (ft²): 364.0000 Standard

### WARNING

SWIMMING POOLS ARE DANGEROUS WHEN USED IMPROPERLY. CONSULT YOUR DEALER FOR INFORMATION ON THE SAFE USE OF SWIMMING POOLS. IT IS THE RESPONSIBILITY OF TOWN OFFICIALS, BUILDERS AND HOME OWNERS TO FOLLOW ALL SAFETY RECOMMENDATIONS OF LOCAL ORDINANCES AND EQUIPMENT MANUFACTURERS FOR DIVING & SLIDING EQUIPMENT REFER TO THE MANUFACTURER'S INSTRUCTIONS TO CORRECTLY POSITION & INSTALL EQUIPMENT.

	A	B	C	D
1	11'-3 3/4"	21'-6 1/2"	21'-6 1/2"	11'-3 3/4"
2	21'-6 1/2"	11'-3 3/4"	11'-3 3/4"	21'-6 1/2"
3	8'-3"	20'-1 1/4"	24'-5"	16'-1 1/2"
4	20'-1 1/4"	8'-3"	16'-1 1/2"	24'-5"
5	24'-5"	16'-1 1/2"	8'-3"	20'-1 1/4"
6	16'-1 1/2"	24'-5"	20'-1 1/4"	8'-3"
S1	18'-1 1/4"	10'-2 1/2"	17'-2 1/2"	22'-9 3/4"
S2	22'-9 3/4"	17'-2 1/2"	10'-2 1/2"	18'-1 1/4"
H1	10'-2 1/2"	18'-1 1/4"	22'-9 3/4"	17'-2 1/2"
H2	17'-2 1/2"	22'-9 3/4"	18'-1 1/4"	10'-2 1/2"
A	-	28'-0"	32'-3"	16'-0"

DIAGONALS	
1 to 2	12'-0"
1 to 3	6'-0"
1 to 4	13'-5"
1 to 5	13'-5"
1 to 6	6'-0"
2 to 3	13'-5"
2 to 4	6'-0"
2 to 5	6'-0"
2 to 6	13'-5"
3 to 4	12'-0"
3 to 5	16'-11 3/4"
3 to 6	12'-0"
4 to 5	12'-0"
4 to 6	16'-11 3/4"
5 to 6	12'-0"
S1 to S2	12'-0"
S1 to H1	8'-0"
S1 to H2	14'-5"
S2 to H1	14'-5"
S2 to H2	8'-0"
H1 to H2	12'-0"



OVAL

14-0 X 28-0

DATE: 01/01/2020

ATLAS SERIES