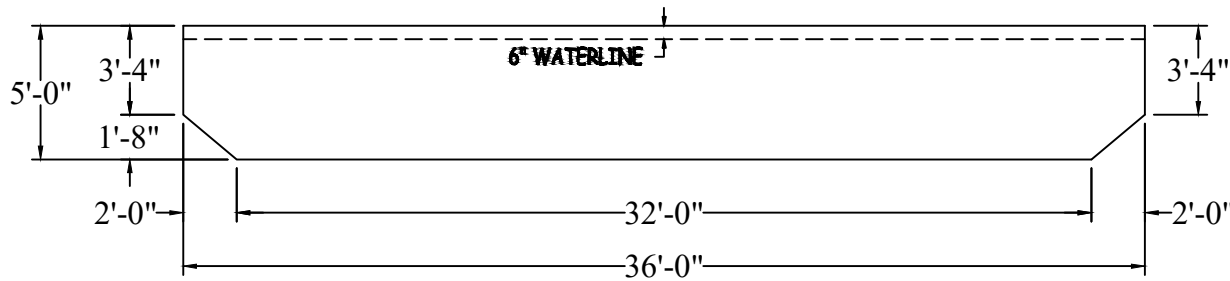
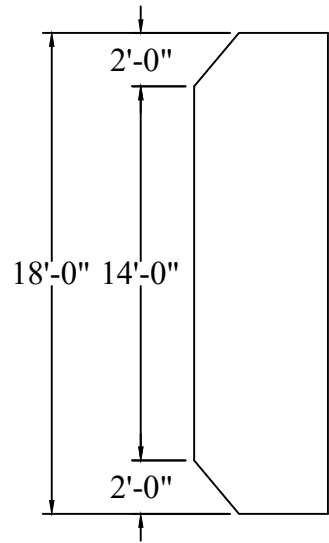
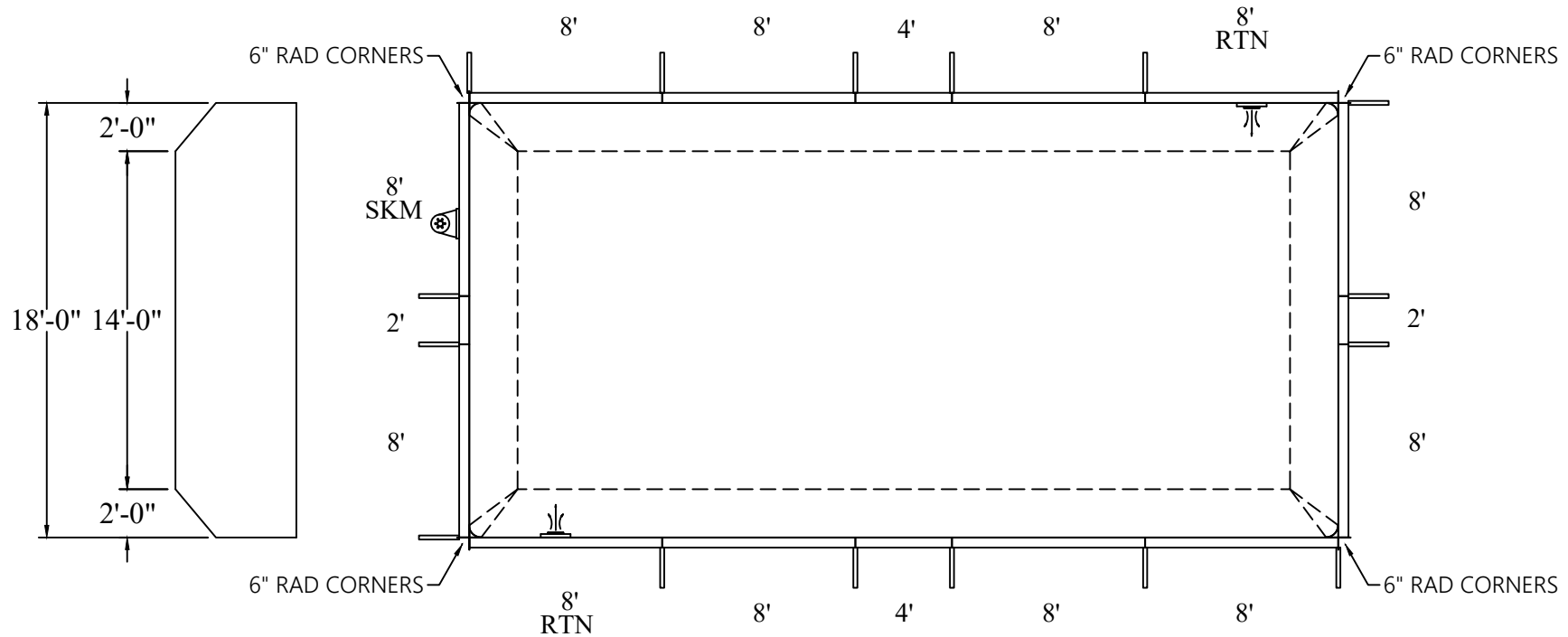


THIS DRAWING REPRESENTS THE FINISHED POOL KIT SPECIFICATIONS. POOL MUST BE DUG TO ACCOUNT FOR THE 42" STEEL WALL AND BOTTOM MATERIAL.



BEAD TRACK STOPS 1-<sup>3</sup>/<sub>4</sub>" FROM FACE ON TOP TREAD OF STEEL STEPS AND BENCHES

Radius Panel Length: 0 ft 0 in  
Straight Panel Length: 0 ft 0 in

**NON DIVING**

QTY	DESCRIPTION
1	STR, 8'0" 3 RIB SK-1085
2	STR, 8'0" 3 RIB RETURN
9	STR, 8'0" 3 RIB
2	STR, 4'0" 1 RIB
2	STR, 2'0" 0 RIB
16	2PC NON-ADJUSTABLE, A-FRAME
4	CORNER ANGLE BRACE, 90°
4	6" RADIUS PVC INSERT, 42" HIGH
4	HARDWARE, STRAIGHT 50 PACK
2	REBAR STAKE, 18" 30 PACK
1	HARDWARE, 50 PACK-EXTRA

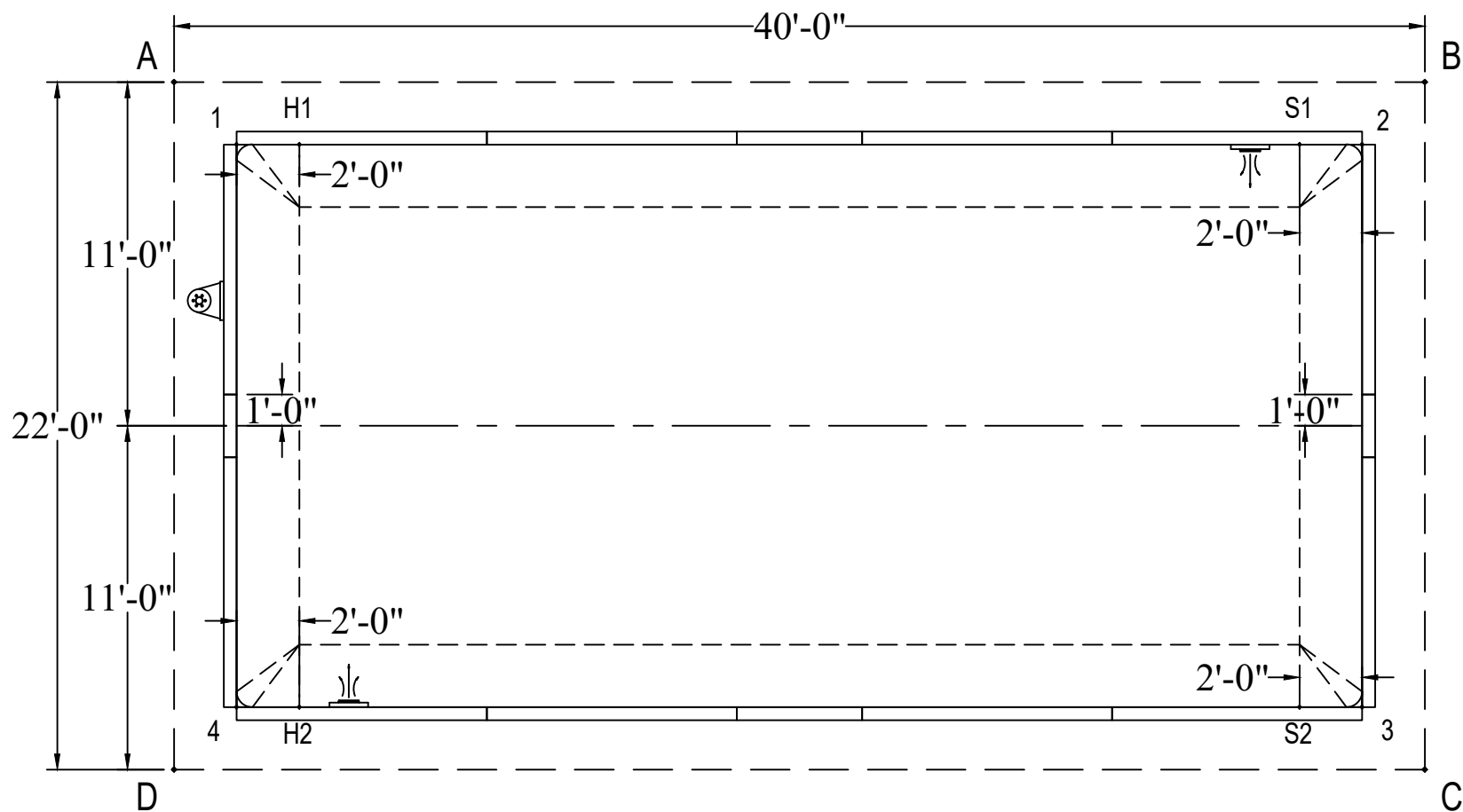
TITLE: 18-0 X 36-0 RECTANGLE 6IN RAD	DATE: 05/17/2022	PERIMETER: 108'-0" LIN.FT.
DWG NUMBER: ATLAS2022-0586	REVISION: ****	SURFACE (ft²): 648.0000
DEALER NAME: POOL SUPPLIES CANADA	SCALE: N.T.S.	LINER (ft²): 648.0000
TAG NAME: ANDREWS 1180141	APPROX. WATER VOLUME: 77 500 LITRES	COVER (ft²): 760.0000 Standard

**ATLAS SERIES**

**WARNING**  
SWIMMING POOLS ARE DANGEROUS WHEN USED IMPROPERLY. CONSULT YOUR DEALER FOR INFORMATION ON THE SAFE USE OF SWIMMING POOLS. IT IS THE RESPONSIBILITY OF TOWN OFFICIALS, BUILDERS AND HOME OWNERS TO FOLLOW ALL SAFETY RECOMMENDATIONS OF LOCAL ORDINANCES AND EQUIPMENT MANUFACTURERS. FOR DIVING & SLIDING EQUIPMENT REFER TO THE MANUFACTURE'S INSTRUCTIONS TO CORRECTLY POSITION & INSTALL EQUIPMENT.

	A	B	C	D
1	2'-10"	38'-0 3/4"	42'-11 1/4"	20'-1 1/4"
2	38'-0 3/4"	2'-10"	20'-1 1/4"	42'-11 1/4"
3	42'-11 1/4"	20'-1 1/4"	2'-10"	38'-0 3/4"
4	20'-1 1/4"	42'-11 1/4"	38'-0 3/4"	2'-10"
S1	36'-0 3/4"	4'-5 3/4"	20'-4 3/4"	41'-2 1/4"
S2	41'-2 1/4"	20'-4 3/4"	4'-5 3/4"	36'-0 3/4"
H1	4'-5 3/4"	36'-0 3/4"	41'-2 1/4"	20'-4 3/4"
H2	20'-4 3/4"	41'-2 1/4"	36'-0 3/4"	4'-5 3/4"
A	-	40'-0"	45'-7 3/4"	22'-0"

DIAGONALS	
1 to 2	36'-0"
1 to 3	40'-3"
1 to 4	18'-0"
2 to 3	18'-0"
2 to 4	40'-3"
3 to 4	36'-0"
S1 to S2	18'-0"
S1 to H1	32'-0"
S1 to H2	36'-8 1/2"
S2 to H1	36'-8 1/2"
S2 to H2	32'-0"
H1 to H2	18'-0"



DWG NUMBER:

ATLAS2022-0586

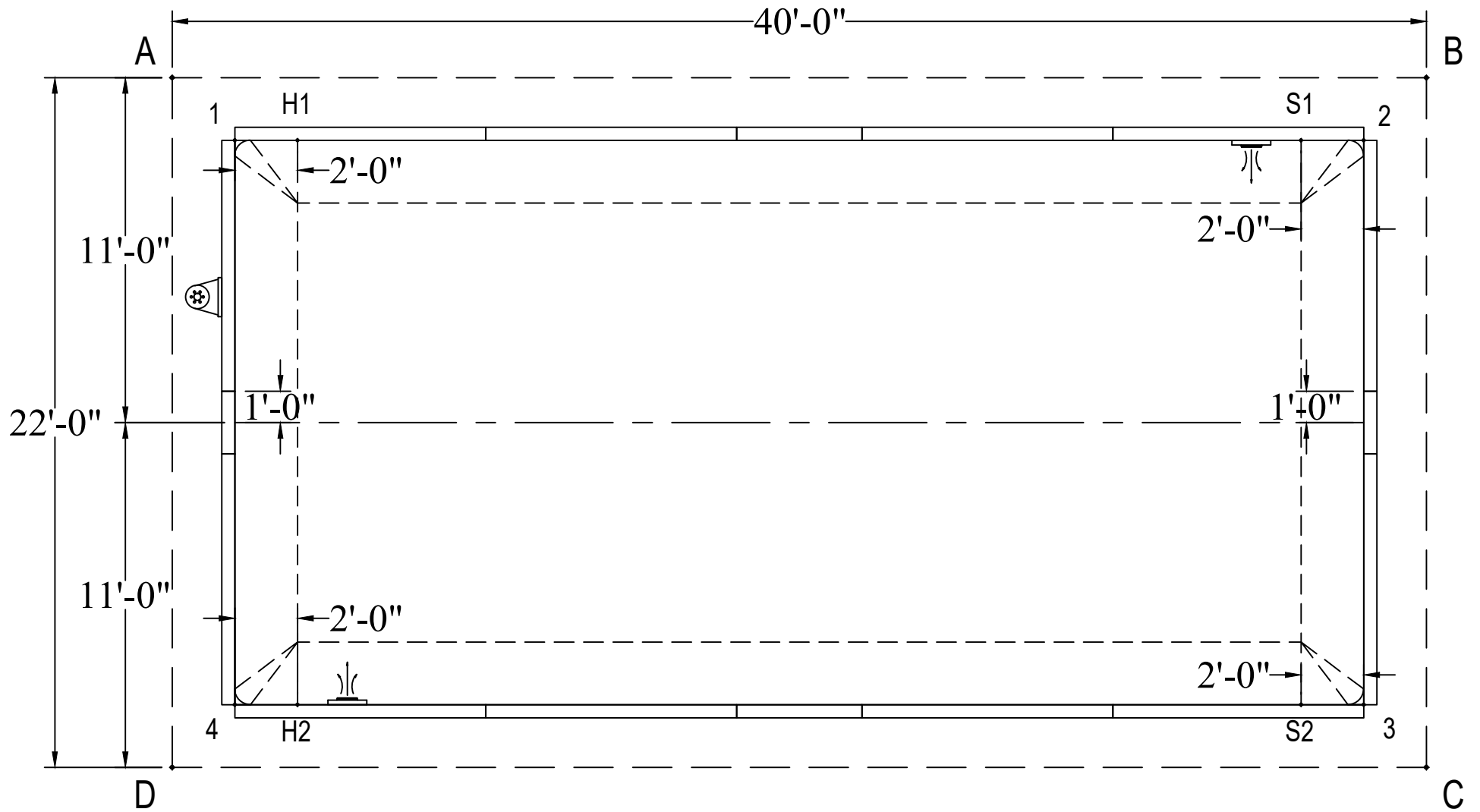
TITLE: 18-0 X 36-0 RECTANGLE 6IN RAD

DEALER NAME: POOL SUPPLIES CANADA

TAG NAME: ANDREWS 1180141

DATE: 05/17/2022

ATLAS SERIES



DWG NUMBER:

ATLAS2022-0586

TITLE: 18-0 X 36-0 RECTANGLE 6IN RAD

DEALER NAME: POOL SUPPLIES CANADA

TAG NAME: ANDREWS 1180141

DATE: 05/17/2022

ATLAS SERIES