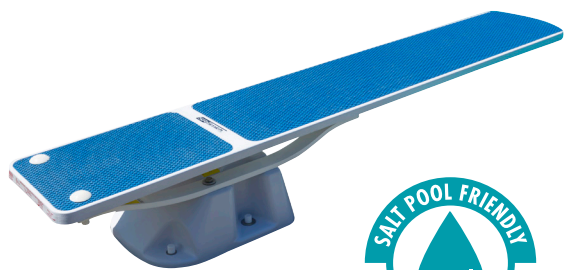
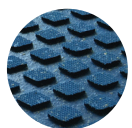


# TrueTread™ Diving Board Series



- Revolutionary TrueTread™ surface provides a modern, sporty look & feel
- Unique texture provides exceptional launching grip that's easy on the feet
- Can be paired with most S.R.Smith diving stands
- Ideal replacement board, provides fresh, custom look
- Available in 6' and 8' lengths
- Salt Pool Friendly
- U.S. Patents pending

## Color Options



BLUE



GRAY



RED

## Compatible with:

- Cantilever\*
- Flyte Deck
- Salt Pool Jump System
- Supreme\*
- U-Frame\*

\*BASE IS NOT SALT FRIENDLY

SHIPPING (BOARD ONLY)					
Part No	Description	Weight	Length	Width	Height
REPLACEMENT BOARDS					
66-209-576S2B	6' Board - Blue	52lbs/24kg	74"/188cm	20"/51cm	3"/8cm
66-209-576S2G	6' Board - Gray	52lbs/24kg	74"/188cm	20"/51cm	3"/8cm
66-209-576S2R	6' Board - Red	52lbs/24kg	74"/188cm	20"/51cm	3"/8cm
66-209-578S2B	8' Board - Blue	70lbs/32kg	98"/249cm	20"/51cm	3"/8cm
66-209-578S2G	8' Board - Gray	70lbs/32kg	98"/249cm	20"/51cm	3"/8cm
66-209-578S2R	8' Board - Red	70lbs/32kg	98"/249cm	20"/51cm	3"/8cm
SHIPPING (3 BOXES)					
Part No	Description	Weight	Length	Width	Height
SALT POOL JUMP SYSTEM WITH TRUETREAD™ BOARD					
68-207-5762B	White Stand w/ 6' Blue Board	27lb/12kg	25"/64cm	20"/51cm	11"/28cm
68-207-5762G	White Stand w/ 6' Gray Board	10lbs/4kg	40"/102cm	5"/13cm	3"/8cm
68-207-5762R	White Stand w/ 6' Red Board	52lbs/24kg	74"/188cm	20"/51cm	3"/8cm
68-207-5782B	White Stand w/ 8' Blue Board	27lb/12kg	25"/64cm	20"/51cm	11"/28cm
68-207-5782G	White Stand w/ 8' Gray Board	14lbs/6kg	48"/122cm	5"/13cm	3"/8cm
68-207-5782R	White Stand w/ 8' Red Board	70lbs/32kg	98"/249cm	20"/51cm	3"/8cm
SHIPPING (2 BOXES)					
Part No	Description	Weight	Length	Width	Height
FLYTE DECK STAND WITH TRUETREAD™ BOARD					
68-207-7362B	White Stand w/ 6' Blue Board	36lb/16kg	74"/188cm	20"/51cm	3"/8cm
68-207-7362G	White Stand w/ 6' Gray Board	27lb/12kg	37"/94cm	18"/46cm	12"/30cm
68-207-7362R	White Stand w/ 6' Red Board				
68-207-7382B	White Stand w/ 8' Blue Board	59lbs/27kg	98"/249cm	20"/51cm	3"/8cm
68-207-7382G	White Stand w/ 8' Gray Board	32lbs/14kg	47"/119cm	19"/48cm	12"/30cm
68-207-7382R	White Stand w/ 8' Red Board				