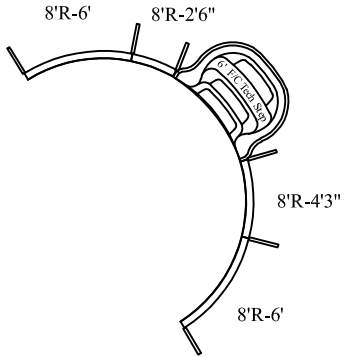
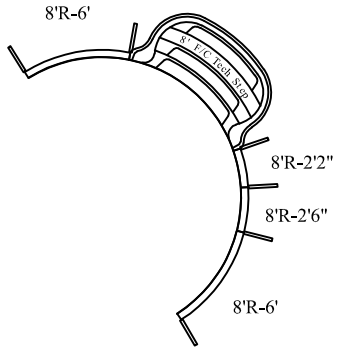


STEP OPTIONS

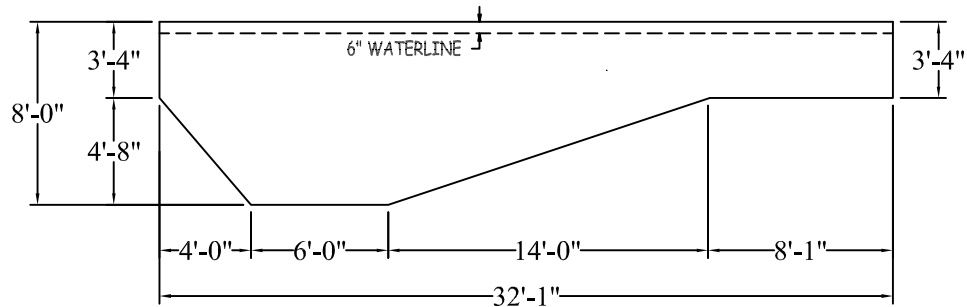
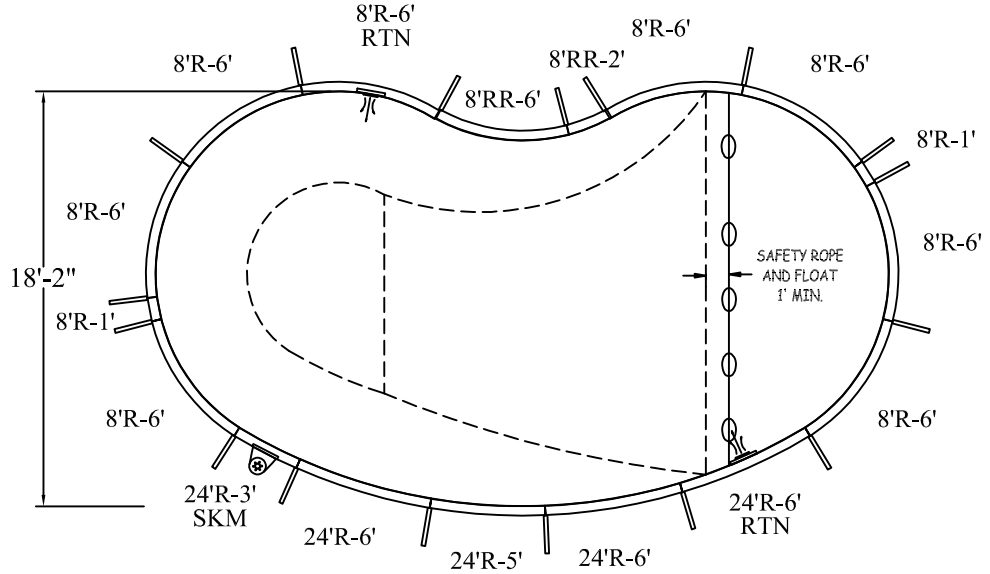
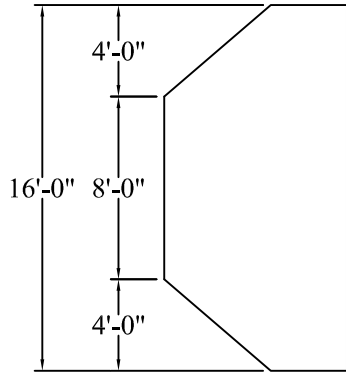
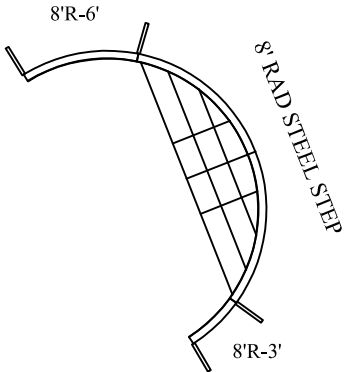
STEP OPTION 1



STEP OPTION 2



STEP OPTION 3



CRESCENT

DATE: 01/01/2018

PERIMETER: 84'-0" LIN.FT.

REVISION:

SURFACE (ft²): 470.7892

16-0 X 18-2 X 32-1 RIGHT

SCALE: 3/16"=1'-0"

LINER (ft²): 513.3328

APPROX. WATER VOLUME: 61 300 LITRES

COVER (ft²): 742.6020 Free Form

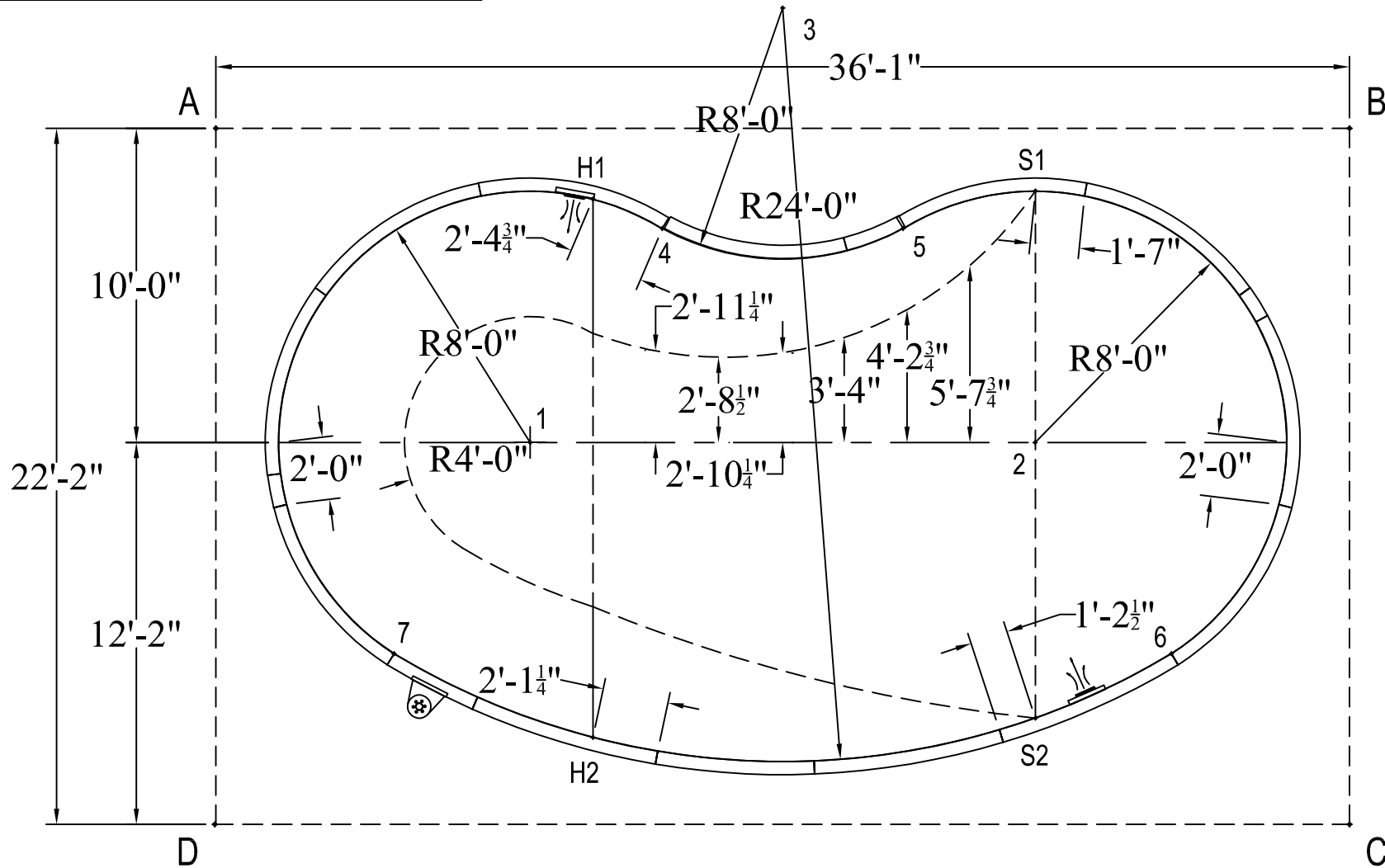
ATLAS SERIES

WARNING

SWIMMING POOLS ARE DANGEROUS WHEN USED IMPROPERLY. CONSULT YOUR DEALER FOR INFORMATION ON THE SAFE USE OF SWIMMING POOLS. IT IS THE RESPONSIBILITY OF TOWN OFFICIALS, BUILDERS AND HOME OWNERS TO FOLLOW ALL SAFETY RECOMMENDATIONS OF LOCAL ORDINANCES AND EQUIPMENT MANUFACTURERS FOR DIVING & SLIDING EQUIPMENT REFER TO THE MANUFACTURER'S INSTRUCTIONS TO CORRECTLY POSITION & INSTALL EQUIPMENT.

	A	B	C	D					
1	14'-1 3/4"	27'-11 1/4"	28'-9 1/4"	15'-9"					
2	27'-11 1/4"	14'-1 3/4"	15'-9"	28'-9 1/4"	S1	26'-2"	10'-2 1/4"	22'-6 1/4"	32'-11 3/4"
3	18'-5 1/4"	18'-5 1/4"	31'-7 3/4"	31'-7 3/4"	S2	32'-1 3/4"	21'-3 1/4"	10'-6 3/4"	26'-3 3/4"
4	14'-6 3/4"	22'-1 1/2"	28'-11 1/2"	23'-8 1/4"	H1	12'-2 1/2"	24'-2 1/4"	31'-3"	23'-3"
5	22'-1 1/2"	14'-6 3/4"	23'-8 1/4"	28'-11 1/2"	H2	22'-9 3/4"	30'-11"	24'-3"	12'-3 3/4"
6	34'-8 1/2"	17'-8"	7'-10 1/4"	30'-10 3/4"	A	-	36'-1"	42'-4 1/4"	22'-2"
7	17'-8"	34'-8 1/2"	30'-10 3/4"	7'-10 1/4"					

DIAGONALS	
1 to 2	16'-1"
1 to 3	16'-0"
1 to 4	8'-0"
1 to 5	13'-8 1/4"
1 to 6	21'-6"
1 to 7	8'-0"
2 to 3	16'-0"
2 to 4	13'-8 1/4"
2 to 5	8'-0"
2 to 6	8'-0"
2 to 7	21'-6"
3 to 4	8'-0 1/4"
3 to 5	8'-0 1/4"
3 to 6	24'-0"
3 to 7	24'-0"
4 to 5	7'-8 1/4"
4 to 6	21'-1 1/2"
4 to 7	16'-0"
5 to 6	16'-0"
5 to 7	21'-1 1/2"
6 to 7	24'-9"
S1 to S2	16'-9 1/2"
S1 to H1	14'-1"
S1 to H2	22'-4 1/2"
S2 to H1	21'-8 1/2"
S2 to H2	14'-1 1/4"
H1 to H2	17'-1 3/4"



CRESCENT

16-0 X 18-2 X 32-1 RIGHT

DATE:01/01/2018

ATLAS SERIES