

STEP ONE CHOOSING YOUR PAINT

SELECTING THE CORRECT COATING DEPENDS ON:

- 1 The type of pool surface material, i.e. bare concrete, plaster or fiberglass, or sandblasted, if uncoated.
- 2 The type of coating currently on your pool.

On coated pools: Smart Seal recommends using the same type of coating to ensure compatibility.

To determine the type of coating currently on your pool, consult with your Smart Seal dealer, or send a chip to Smart Seal for analysis or test your own, see below.

HOW TO DETERMINE YOUR TYPE OF COATING:

- 1 Immerse a small chip in 98% isopropyl alcohol. If the chip dissolves, your coating is an acrylic.
- 2 If it DOES NOT DISSOLVE, Immerse a new chip in 100% rubber base solvent (Xylol). If it dissolves, it's a rubber base. If it DOES NOT DISSOLVE, it's an epoxy.

What Is Your Pool's Present Condition?

BARE UNCOATED POOLS:

If your pool is bare (concrete or plaster), then you need...

- Dura Seal (1 coat) with Prime It! or Rough Prime, OR
- SR Pro 7 (2 coats), OR
- Aqua Seal (2 coats)

If your pool is fiberglass or sandblasted, then you need...

Dura Seal (1 coat) with Rough Prime

PREVIOUSLY COATED POOLS:

If your pool has been previously coated with a rubber base paint, then you need...

- SR Pro 7 (2 coats), OR
- Smart Step Conversion Coating (before painting with Dura Seal), OR
- Aqua Seal (2 coats) - only recommended for very worn rubber base

If your pool has been previously coated with an epoxy paint, then you need...

- Dura Seal

If your pool has been previously coated with an acrylic paint, then you need...

- Aqua Seal

STEP TWO CALCULATING AMOUNT

Choose the shape that best resembles your pool. Use the formula below to find the approximate square feet. Check the coverage of the product you select to determine how much you will need.



RECTANGLE
length x width x 1.6
= total square feet



ROMAN
length x width x 1.55
= total square feet



LAZY L
length x width x 1.65
= total square feet



FREEFORM
length x width x 1.6
= total square feet



OVAL
length x width x 1.65
= total square feet

STEP THREE PREPARING SURFACE

The most important procedure before coating any surface is surface preparation. Coatings will not adhere properly to even the slightest amount of oil, dirt, salt, or mineral deposits.

Cleaning your pool is mandatory before applying any Smart Seal coating. Surface cleaning also applies to patios and decks prior to the application of Patio Perfect.

Prep Wise Cleans in One Easy Step!

Prep Wise is a one-step clean and etch surface preparation solution. Simply mix Prep Wise with water to clean, and then rinse.

DO NOT use a solution weaker than described on the Prep Wise label. DO clean every square inch, and be sure to wear safety shoes, gloves and goggles.

After surface preparation, your pool will be water-saturated from cleaning. If you're using Aqua Seal or Prime It!, you can paint right away. If you're using Rough Prime, Dura Seal or SR Pro 7, you must wait until your pool dries completely before painting.



STEP FOUR APPLYING YOUR PAINT

NOTE: ALWAYS wear protective gloves, shoes and eyewear before starting. ALWAYS read and follow the instructions on ALL product labels.

After completing the correct surface preparation procedures for your swimming pool, you will be ready to paint your surface. Use a 9" roller with a 1/2" nap and a solvent-resistant core. Consult the Curing Schedule on your product label before filling pool with water.

APPLYING DURA SEAL PREMIUM EPOXY ONE-COAT PAINT

Use a 9" roller with a 1/2" nap and solvent-resistant core. See Step 1 for Dura Seal to determine the proper coating procedure for your present pool surface condition. A liberal application provides a very durable finish.

APPLYING SR PRO 7 SYNTHETIC RUBBER BASE PAINT

Make sure the surface is 100% dry. Water trapped under the new paint will result in blistering. **Two coats required, unpainted.**

For bare surfaces, thin the first coat 25% with locally allowed VOC compliant solvent. Allow first coat of paint to dry completely before applying the second coat. The second coat should be applied at full strength. **Two coats required.**

APPLYING AQUA SEAL ACRYLIC ENAMEL PAINT

Aqua Seal is water-reducible and can be applied directly to the damp surface. No drying out time after cleaning. Do not apply over standing water.

On bare surfaces, thin the first coat 10% with water. After completely drying, apply the second coat full strength.

POOL PAINTING APPLICATION TIPS

- Follow the application instructions provided on the label.
- Read label for minimum and maximum application temperatures.
- Do not apply during a hot midday sun.
- Use a 1/2" nap roller cover with a solvent-resistant core.
- Use quality handles and rollers.
- Use a basic rolling technique.
- To prevent roller marks, start and finish painting in a corner.
- Start with the deep-end walls and work toward the shallow end of the pool.
- Although rolling is recommended, contact Smart Seal for application tips if you are considering a spray method.
- Prior to filling your pool, **ALWAYS** consult the curing schedule outlined on the label.
- If using Dura Seal, sprinkle some white silica sand on pool steps for slip-proofing.

IMPORTANT! BEFORE YOU BEGIN PAINTING, PREPARE YOUR POOL SURFACE FIRST. SEE STEP 3 FOR SURFACE PREPARATION.

LESLIE'S
Smart Seal
THE SMART CHOICE



POOL & DECK PAINT GUIDE PAINT GUIDE

A Simple, Do-It-Yourself Process
With Professional Results

smartsealco.com

Pool Paint

DURA SEAL EPOXY

2-Part Catalyst System
PREMIUM EPOXY
ONE-COAT EPOXY



OUR LONGEST LASTING!

- Cures to a bright tile-like finish
- Apply on bare, sandblasted or old epoxy
- Virtually maintenance-free
- Use on old plaster instead of replastering
- Use on fiberglass (with Rough Prime)
- **Primer required on bare surfaces**

Coverage:
125 - 150 sq ft per gallon

SR PRO 7 RUBBER

LONG-LIFE SYNTHETIC RUBBER



- Coating over rubber-based finishes
- For smooth, bare cement surfaces
- Attractive satin finish
- Minimum two coats on initial application

Coverage:
250 - 275 sq ft per gallon

AQUA SEAL ACRYLIC

TOUGHEST WATER BASE FORMULA
POOL PAINT



- Water-based formula
- Applies to damp surfaces
- Virtually no solvent odor
- Minimum two coats on initial application

Coverage:
250 - 275 sq ft per gallon

Epoxy Primers

PRIME IT BARE SURFACE

WATER-BASED EPOXY PRIMER
2-Part Catalyst System



- Seals smooth, bare concrete or plaster
- Compatible with damp surfaces

For bare/unpainted surfaces only

Coverage:
225 sq ft per gallon



Our goal is to provide the latest technology and innovations while maintaining our commitment to the health and well-being of our environment.

ROUGH PRIME ROUGH SURFACE

EPOXY POOL PRIMER
2-Part Catalyst System



- Smooths rough concrete or plaster
- Recommended for sandblasted surfaces
- Excellent adhesion to fiberglass
- Heavy viscosity acts as a "filler" for a more uniform profile

Coverage:
125 - 150 sq ft per gallon

Prep & Conversion Coating

PREP WISE CLEAN & ETCH

1-STEP SURFACE PREPARATION



- Cleaning your pool or deck is mandatory before applying any finish coating
- Cleans, etches and prepares surfaces for your new Smart Seal surface
- Simply mix Prep Wise with water to clean, then rinse
- Cleans pool filters too!

Coverage:
1 gallon of solution cleans approximately 400 sq ft

SMART STEP CONVERSION

CONVERTS STABLE RUBBER BASE TO EPOXY



- Clean surface then roll on smart step
- Follow with one coat of Dura Seal

Simply clean your pool, roll on Smart Step, then follow with one coat of Dura Seal. Your rubber-to-epoxy finish will be beautiful and make your pool last for many years.

Coverage:
225 - 250 sq ft per gallon

Patio & Deck Paint

PATIO PERFECT PATIO

NON-SLIP ACRYLIC
DECK & PATIO PAINT



- Slip-resistance adds protection
- Rolls on easily, covers unsightly repairs
- For sprayed or patterned concrete
- Two coats required on initial application

Coverage: 100 - 125 sq ft per gallon,
depending on surface porosity



DIVING BOARD RESURFACE KIT

FOR ALUMINUM AND FIBERGLASS
DIVING BOARDS



- Slip-resistant
- Apply to fiberglass or aluminum
- Kit contains: 1 qt of SafeSEAL paint, 1/2 pt of SafeSEAL catalyst, 1 pt of epoxy solvent, 1 roller cover, and complete instructions



Beautifully Restore Your Pool & Patio

A Simple,
Do-It-Yourself
Process With
Professional Results



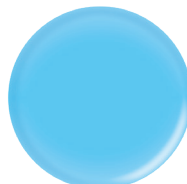
Custom colors available. Ask a Leslie's store representative for details.
The colors shown below are not color match swatches.

POOL COLORS

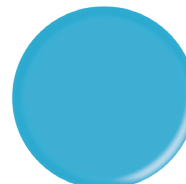
DECK COLORS



White



Ice Blue



Blue Heaven



Smooth Cream



Honey Mist



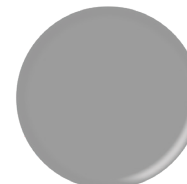
Wheat Dust



Desert Tan



Prairie Sand



Stone Creek