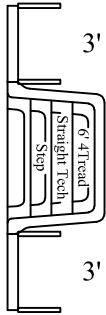
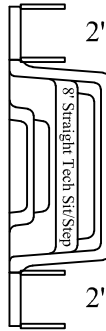


STEP OPTIONS

STEP OPTION 1



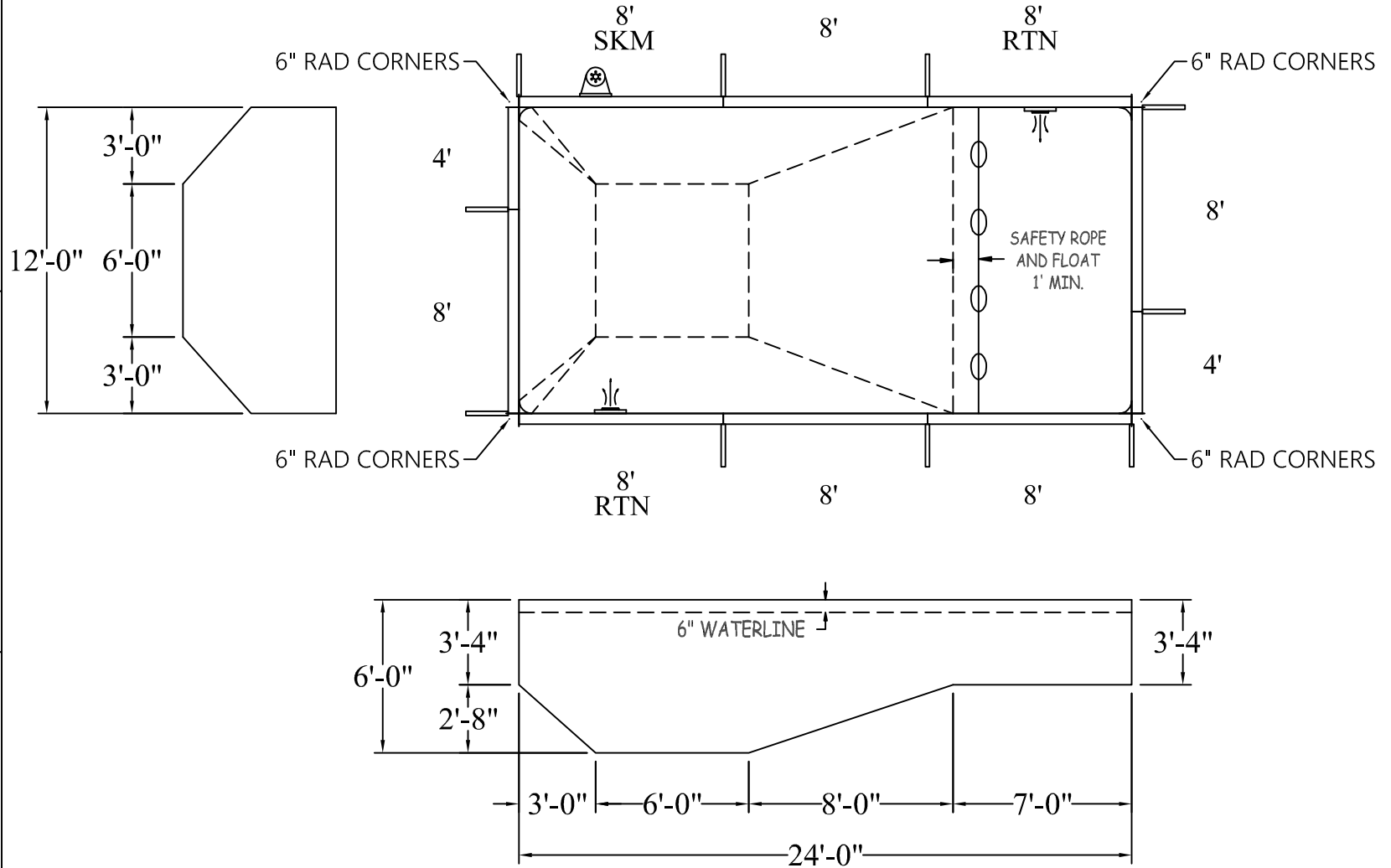
STEP OPTION 2



STEP OPTION 3



P-ST-PB-1443SP



NON DIVING

RECTANGLE 6IN RAD

DATE: 01/01/2019

PERIMETER: 72'-0" LIN.FT.

ATLAS SERIES

REVISION:

SURFACE (ft²): 288.0000

12-0 X 24-0

SCALE: N.T.S.

LINER (ft²): 288.0000

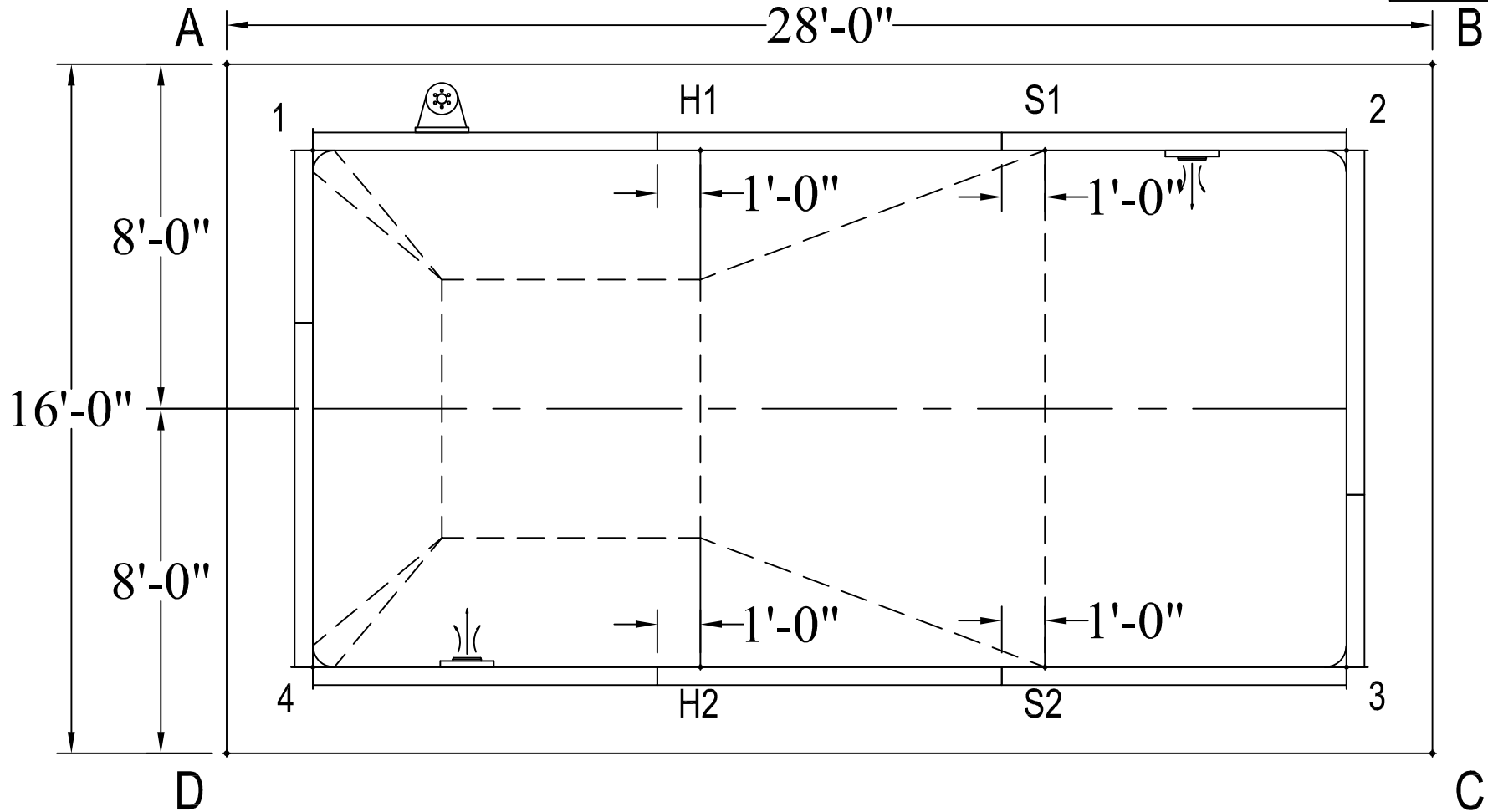
APPROX. WATER VOLUME: 30 300 LITRES

COVER (ft²): 364.0000 Standard

WARNING
 SWIMMING POOLS ARE DANGEROUS WHEN USED IMPROPERLY. CONSULT YOUR DEALER FOR INFORMATION ON THE SAFE USE OF SWIMMING POOLS. IT IS THE RESPONSIBILITY OF TOWN OFFICIALS, BUILDERS AND HOME OWNERS TO FOLLOW ALL SAFETY RECOMMENDATIONS OF LOCAL ORDINANCES AND EQUIPMENT MANUFACTURERS FOR DIVING & SLIDING EQUIPMENT REFER TO THE MANUFACTURER'S INSTRUCTIONS TO CORRECTLY POSITION & INSTALL EQUIPMENT.

	A	B	C	D
1	2'-10"	26'-1"	29'-6 1/4"	14'-1 3/4"
2	26'-1"	2'-10"	14'-1 3/4"	29'-6 1/4"
3	29'-6 1/4"	14'-1 3/4"	2'-10"	26'-1"
4	14'-1 3/4"	29'-6 1/4"	26'-1"	2'-10"
S1	19'-1 1/4"	9'-2 3/4"	16'-7 3/4"	23'-7 1/4"
S2	23'-7 1/4"	16'-7 3/4"	9'-2 3/4"	19'-1 1/4"
H1	11'-2 1/4"	17'-1 1/2"	22'-0 1/4"	17'-9 3/4"
H2	17'-9 3/4"	22'-0 1/4"	17'-1 1/2"	11'-2 1/4"
A	-	28'-0"	32'-3"	16'-0"

DIAGONALS	
1 to 2	24'-0"
1 to 3	26'-10"
1 to 4	12'-0"
2 to 3	12'-0"
2 to 4	26'-10"
3 to 4	24'-0"
S1 to S2	12'-0"
S1 to H1	8'-0"
S1 to H2	14'-5"
S2 to H1	14'-5"
S2 to H2	8'-0"
H1 to H2	12'-0"



RECTANGLE 6IN RAD

12-0 X 24-0

DATE:01/01/2019

ATLAS SERIES