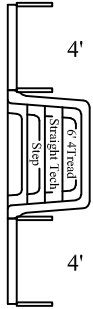
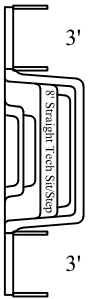


STEP OPTIONS

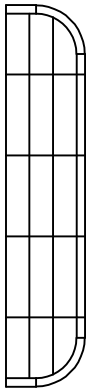
STEP OPTION 1



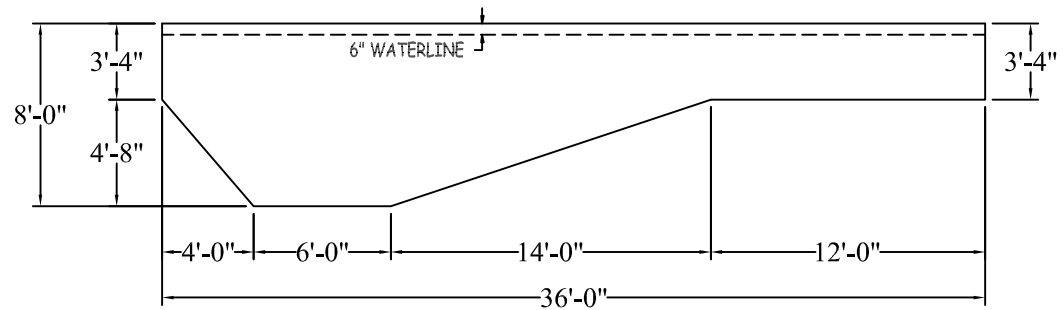
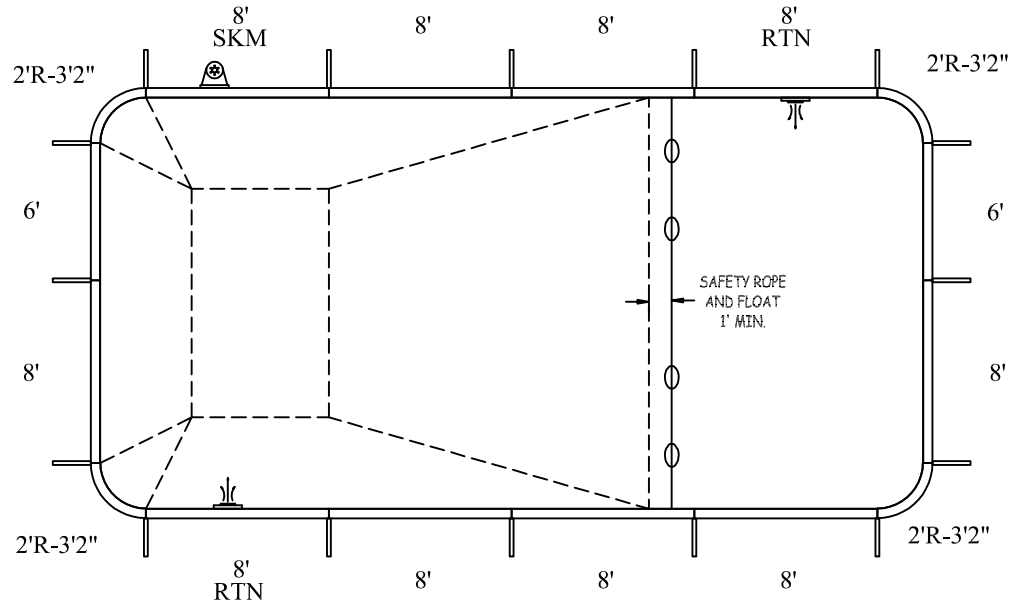
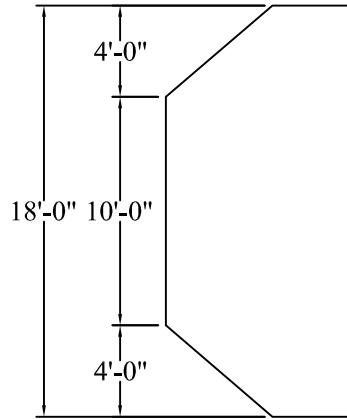
STEP OPTION 2



STEP OPTION 3



P-ST-PB-2163SP-2R



RECTANGLE 2FT RAD

18-0 X 36-0

DATE: 01/01/2019

REVISION:

SCALE: N.T.S.

APPROX. WATER VOLUME: 80 200 LITRES

PERIMETER: 104'-8" LIN.FT.

SURFACE (ft²): 644.5664

LINER (ft²): 648.0000

COVER (ft²): 760.0000 Standard

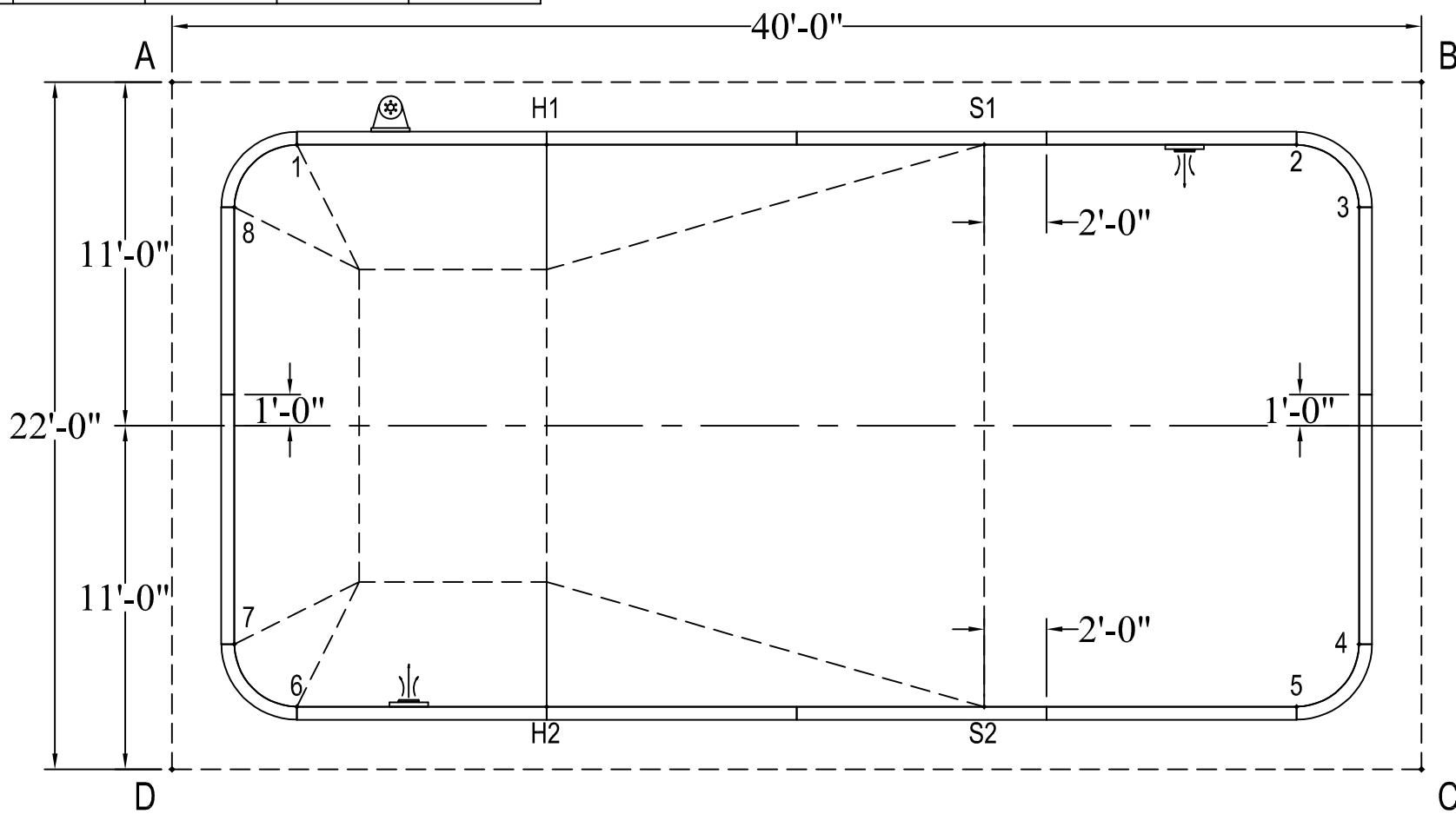
ATLAS SERIES

WARNING

SWIMMING POOLS ARE DANGEROUS WHEN USED IMPROPERLY. CONSULT YOUR DEALER FOR INFORMATION ON THE SAFE USE OF SWIMMING POOLS. IT IS THE RESPONSIBILITY OF TOWN OFFICIALS, BUILDERS AND HOME OWNERS TO FOLLOW ALL SAFETY RECOMMENDATIONS OF LOCAL ORDINANCES AND EQUIPMENT MANUFACTURERS FOR DIVING & SLIDING EQUIPMENT REFER TO THE MANUFACTURER'S INSTRUCTIONS TO CORRECTLY POSITION & INSTALL EQUIPMENT.

	A	B	C	D
1	4'-5 3/4"	36'-0 3/4"	41'-2 1/4"	20'-4 3/4"
2	36'-0 3/4"	4'-5 3/4"	20'-4 3/4"	41'-2 1/4"
3	38'-2 1/2"	4'-5 3/4"	18'-1 1/4"	42'-0 1/2"
4	42'-0 1/2"	18'-1 1/4"	4'-5 3/4"	38'-2 1/2"
5	41'-2 1/4"	20'-4 3/4"	4'-5 3/4"	36'-0 3/4"
6	20'-4 3/4"	41'-2 1/4"	36'-0 3/4"	4'-5 3/4"
7	18'-1 1/4"	42'-0 1/2"	38'-2 1/2"	4'-5 3/4"
8	4'-5 3/4"	38'-2 1/2"	42'-0 1/2"	18'-1 1/4"
S1	26'-1"	14'-1 3/4"	24'-5"	32'-9 3/4"
S2	32'-9 3/4"	24'-5"	14'-1 3/4"	26'-1"
H1	12'-2"	28'-0 3/4"	34'-5"	23'-4"
H2	23'-4"	34'-5"	28'-0 3/4"	12'-2"
A	-	40'-0"	45'-7 3/4"	22'-0"

DIAGONALS	
1 to 2	32'-0"
1 to 3	34'-0 3/4"
1 to 4	37'-7"
1 to 5	36'-8 1/2"
1 to 6	18'-0"
1 to 7	16'-1 1/2"
1 to 8	2'-10"
2 to 3	2'-10"
2 to 4	16'-1 1/2"
2 to 5	18'-0"
2 to 6	36'-8 1/2"
2 to 7	37'-7"
2 to 8	34'-0 3/4"
3 to 4	14'-0"
3 to 5	16'-1 1/2"
3 to 6	37'-7"
3 to 7	38'-7 1/2"
3 to 8	36'-0"
4 to 5	2'-10"
4 to 6	34'-0 3/4"
4 to 7	36'-0"
4 to 8	38'-7 1/2"
5 to 6	32'-0"
5 to 7	34'-0 3/4"
5 to 8	37'-7"
6 to 7	2'-10"
6 to 8	16'-1 1/2"
7 to 8	14'-0"
S1 to S2	18'-0"
S1 to H1	14'-0"
S1 to H2	22'-9 3/4"
S2 to H1	22'-9 3/4"
S2 to H2	14'-0"
H1 to H2	18'-0"



RECTANGLE 2FT RAD

18-0 X 36-0

DATE:01/01/2019

ATLAS SERIES