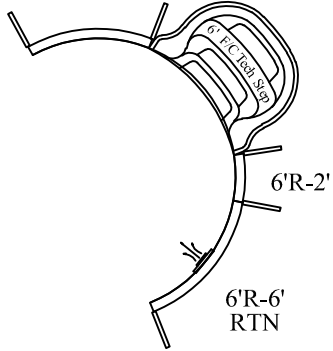


STEP OPTIONS

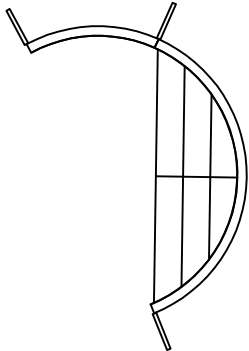
STEP OPTION 1

6'R-5'3"

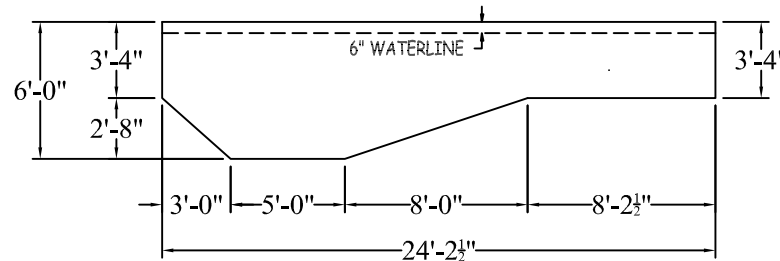
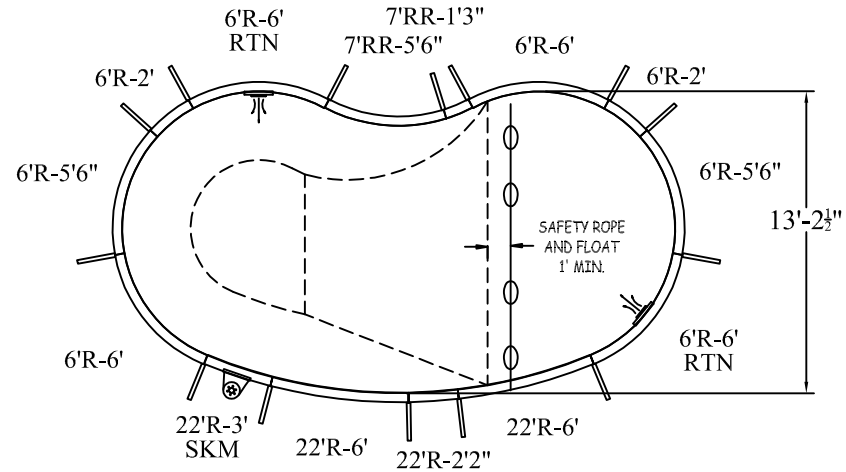
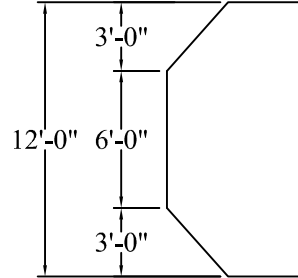


STEP OPTION 2

6'R-5'6"



P-ST-PB-6003R



NON DIVING

ATLAS SERIES

WARNING

SWIMMING POOLS ARE DANGEROUS WHEN USED IMPROPERLY. CONSULT YOUR DEALER FOR INFORMATION ON THE SAFE USE OF SWIMMING POOLS. IT IS THE RESPONSIBILITY OF TOWN OFFICIALS, BUILDERS AND HOME OWNERS TO FOLLOW ALL SAFETY RECOMMENDATIONS OF LOCAL ORDINANCES AND EQUIPMENT MANUFACTURERS FOR DIVING & SLIDING EQUIPMENT REFER TO THE MANUFACTURER'S INSTRUCTIONS TO CORRECTLY POSITION & INSTALL EQUIPMENT.

CRESCENT

DATE: 01/01/2019

PERIMETER: 62'-11" LIN.FT.

REVISION:

SURFACE (ft²): 261.9423

SCALE: N.T.S.

LINER (ft²): 290.4996

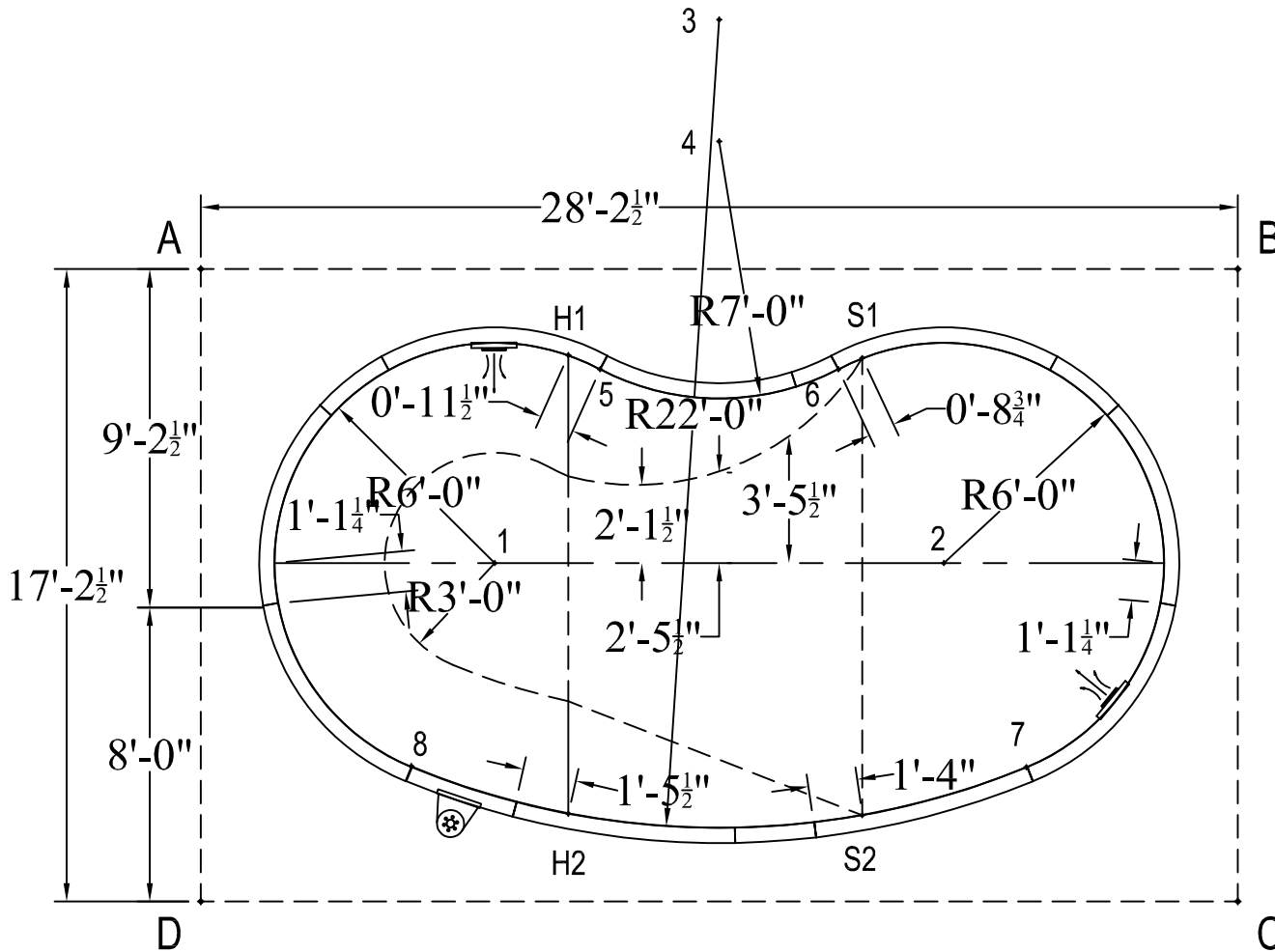
12-0 X 13-3 X 24-3 RIGHT

APPROX. WATER VOLUME: 28 100 LITRES

COVER (ft²): 442.8125 Free Form

	A	B	C	D					
1	11'-3 3/4"	21'-8 3/4"	22'-2 1/2"	12'-2 1/2"					
2	21'-8 3/4"	11'-3 3/4"	12'-2 1/2"	22'-2 1/2"	S1	18'-2"	10'-6"	17'-11 3/4"	23'-3 1/2"
3	15'-7 3/4"	15'-7 3/4"	27'-10"	27'-10"	S2	23'-4 1/4"	18'-0 1/2"	10'-5 3/4"	18'-1 3/4"
4	14'-6 1/4"	14'-6 1/4"	25'-0 1/2"	25'-0 1/2"	H1	10'-3 1/4"	18'-4 1/4"	23'-6 1/4"	17'-11"
5	11'-2 1/2"	17'-6 3/4"	22'-7 1/4"	18'-1 1/4"	H2	17'-10 1/2"	23'-5 3/4"	18'-4 1/2"	10'-3 1/4"
6	17'-6 3/4"	11'-2 1/2"	18'-1 1/4"	22'-7 1/4"	A	-	28'-2 1/2"	33'-0 1/2"	17'-2 1/2"
7	26'-3"	14'-8 1/2"	6'-9 1/2"	22'-9 1/4"					
8	14'-8 3/4"	26'-2 3/4"	22'-9"	6'-9 3/4"					

DIAGONALS	
1 to 2	12'-2 1/2"
1 to 3	16'-0"
1 to 4	13'-0"
1 to 5	6'-0"
1 to 6	10'-8 3/4"
1 to 7	15'-6 1/4"
1 to 8	6'-0"
2 to 3	16'-0"
2 to 4	13'-0"
2 to 5	10'-8 3/4"
2 to 6	6'-0"
2 to 7	6'-0"
2 to 8	15'-6"
3 to 4	3'-3 3/4"
3 to 5	10'-0 3/4"
3 to 6	10'-0 3/4"
3 to 7	22'-0"
3 to 8	22'-0"
4 to 5	7'-0"
4 to 6	7'-0"
4 to 7	18'-11 3/4"
4 to 8	18'-11 3/4"
5 to 6	6'-5 3/4"
5 to 7	15'-10 1/2"
5 to 8	11'-11 3/4"
6 to 7	11'-11 3/4"
6 to 8	15'-10 1/2"
7 to 8	16'-8 3/4"
S1 to S2	12'-5 1/4"
S1 to H1	8'-0"
S1 to H2	14'-9"
S2 to H1	14'-10 1/4"
S2 to H2	8'-0"
H1 to H2	12'-5 3/4"



CRESCENT

12-0 X 13-3 X 24-3 RIGHT

DATE:01/01/2019

ATLAS SERIES