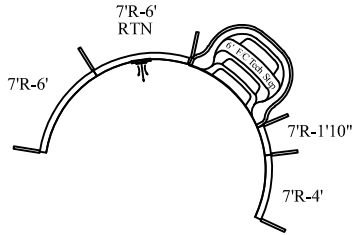
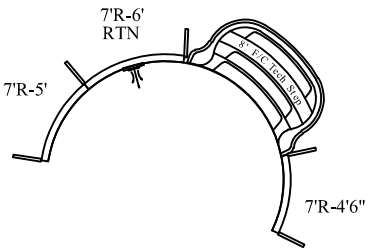


# STEP OPTIONS

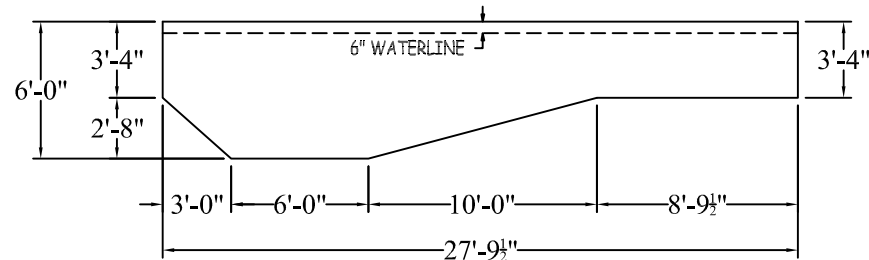
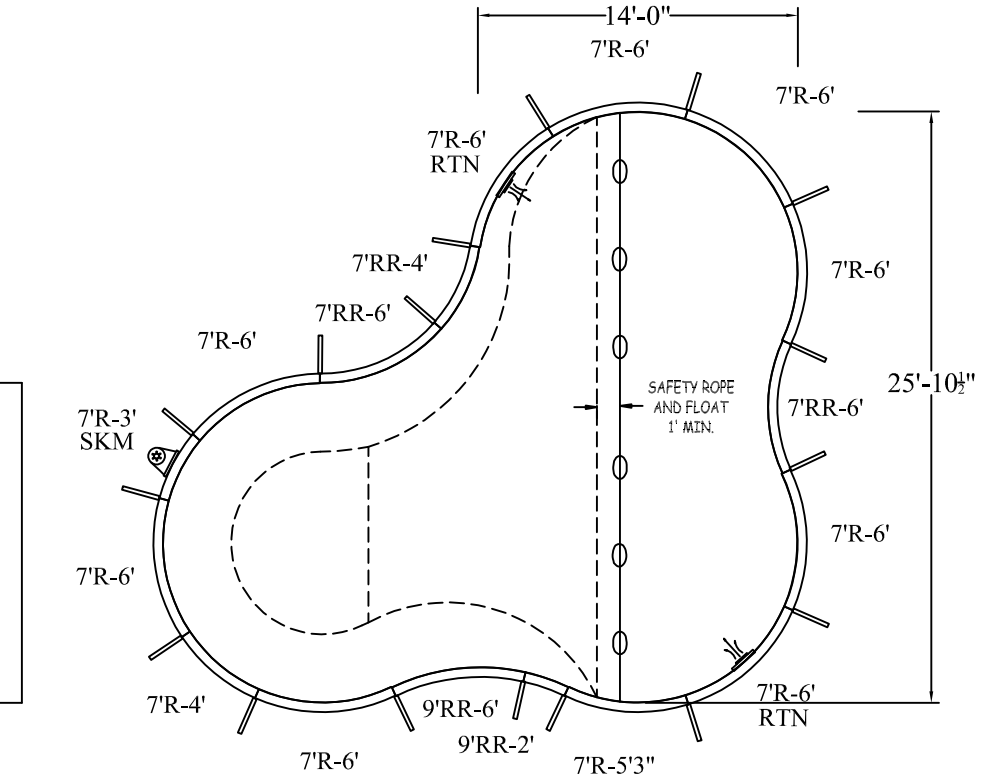
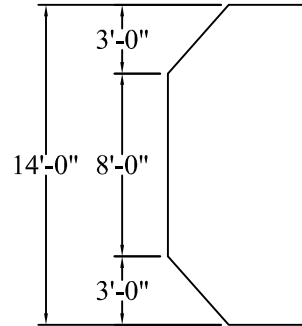
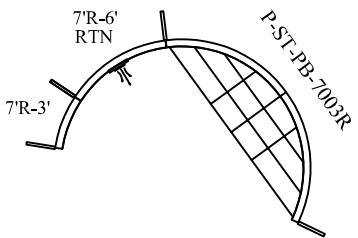
## STEP OPTION 1



## STEP OPTION 2



## STEP OPTION 3



**NON DIVING**

**ATLAS SERIES**

**WARNING**

SWIMMING POOLS ARE DANGEROUS WHEN USED IMPROPERLY. CONSULT YOUR DEALER FOR INFORMATION ON THE SAFE USE OF SWIMMING POOLS. IT IS THE RESPONSIBILITY OF TOWN OFFICIALS, BUILDERS AND HOME OWNERS TO FOLLOW ALL SAFETY RECOMMENDATIONS OF LOCAL ORDINANCES AND EQUIPMENT MANUFACTURERS FOR DIVING & SLIDING EQUIPMENT REFER TO THE MANUFACTURER'S INSTRUCTIONS TO CORRECTLY POSITION & INSTALL EQUIPMENT.

**LAGOON**

DATE: 01/01/2019

PERIMETER: 90'-3" LIN.FT.

REVISION:

SURFACE (ft²): 493.2317

SCALE: N.T.S.

LINER (ft²): 555.3338

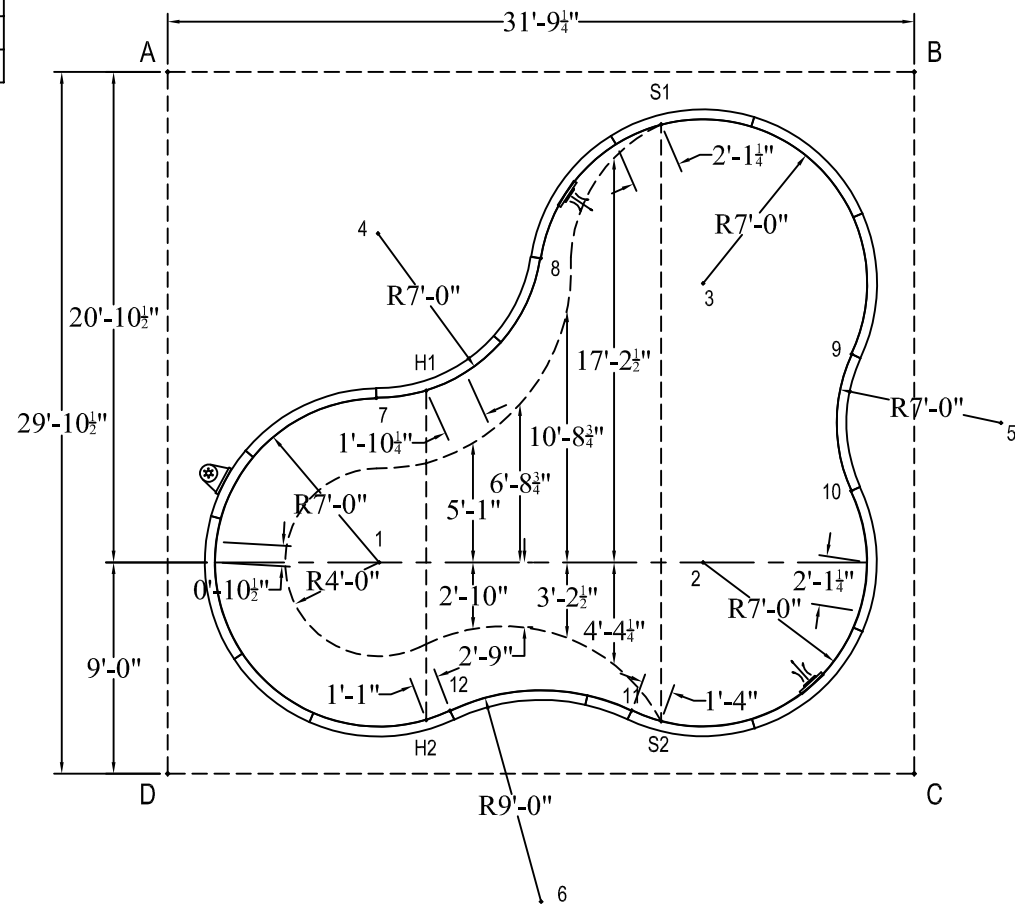
APPROX. WATER VOLUME: 50 800 LITRES

COVER (ft²): 726.7500 FREEFORM

**14-0 X 25-11 X 27-10 RIGHT**

	A	B	C	D
1	22'-8 3/4"	30'-10 3/4"	24'-6"	12'-8 3/4"
2	30'-10 3/4"	22'-8 3/4"	12'-8 3/4"	24'-6"
3	24'-6"	12'-8 1/2"	22'-8 3/4"	30'-11"
4	11'-3 1/2"	23'-10"	32'-4 3/4"	24'-8 1/4"
5	38'-5 3/4"	15'-4 3/4"	15'-4 3/4"	38'-5 3/4"
6	38'-8 3/4"	38'-8 3/4"	16'-9 1/2"	16'-9 1/2"
7	16'-5 3/4"	26'-9 1/4"	27'-11 1/4"	18'-3 1/2"
8	17'-8 3/4"	17'-9 1/2"	27'-1 1/4"	27'-1"
9	31'-6"	12'-3 1/2"	18'-0 3/4"	34'-2"
10	34'-1 1/2"	18'-0 1/2"	12'-4"	31'-5 3/4"
11	33'-7 1/4"	29'-8 3/4"	12'-3 3/4"	19'-11 1/4"
12	29'-8 3/4"	33'-7 1/4"	19'-11 1/4"	12'-3 3/4"
S1	21'-1 1/2"	11'-0"	29'-8"	34'-8 1/2"
S2	34'-8 1/2"	29'-8"	11'-0"	21'-1 1/2"
H1	17'-5 1/2"	24'-9 3/4"	26'-5"	19'-8"
H2	29'-8 1/4"	34'-6 1/2"	20'-10 3/4"	11'-2 3/4"
A	-	31'-9 1/4"	43'-7 1/2"	29'-10 1/2"

DIAGONALS		2 to 6	16'-0"	3 to 12	21'-1 3/4"
1 to 2	13'-9 1/2"	2 to 7	15'-7"	4 to 5	27'-8 1/2"
1 to 3	18'-2 1/2"	2 to 8	14'-8"	4 to 6	29'-3 1/4"
1 to 4	14'-0"	2 to 9	10'-10 3/4"	4 to 7	7'-0"
1 to 5	27'-1 1/2"	2 to 10	7'-0"	4 to 8	7'-0"
1 to 6	16'-0"	2 to 11	7'-0"	4 to 9	20'-9 3/4"
1 to 7	7'-0"	2 to 12	12'-6"	4 to 10	22'-11 1/4"
1 to 8	14'-7 3/4"	3 to 4	14'-0"	4 to 11	23'-0"
1 to 9	21'-11 3/4"	3 to 5	14'-0"	4 to 12	20'-6 1/2"
1 to 10	20'-3 3/4"	3 to 6	27'-2 1/2"	5 to 6	28'-3"
1 to 11	12'-5 3/4"	3 to 7	14'-9"	5 to 7	26'-7 1/4"
1 to 12	7'-0"	3 to 8	7'-0"	5 to 8	20'-9 3/4"
2 to 3	11'-10 1/2"	3 to 9	7'-0"	5 to 9	7'-0"
2 to 4	19'-8 1/4"	3 to 10	10'-10 1/4"	5 to 10	7'-0"
2 to 5	14'-0"	3 to 11	18'-5 1/4"	5 to 11	19'-11"



5 to 12	26'-5 1/2"
6 to 7	22'-6 3/4"
6 to 8	27'-4 1/2"
6 to 9	26'-9 1/2"
6 to 10	21'-10 3/4"
6 to 11	9'-0"
6 to 12	9'-0"
7 to 8	9'-2"
7 to 9	20'-3 3/4"
7 to 10	20'-7 1/4"
7 to 11	17'-2 1/4"
7 to 12	13'-8 1/4"
8 to 9	13'-10 1/4"
8 to 10	16'-6 1/4"
8 to 11	19'-7 3/4"
8 to 12	19'-7 3/4"
9 to 10	5'-10"
9 to 11	17'-10"
9 to 12	22'-10 1/2"
10 to 11	13'-2 1/2"
10 to 12	19'-5 1/2"
11 to 12	7'-8 3/4"
S1 to S2	25'-5"
S1 to H1	15'-1 1/2"
S1 to H2	27'-3"
S2 to H1	17'-3 1/4"
S2 to H2	10'-0"
H1 to H2	14'-0 1/4"