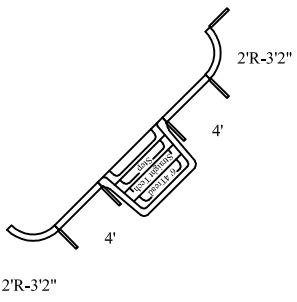
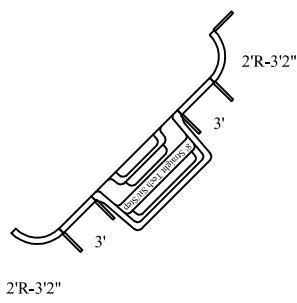


STEP OPTIONS

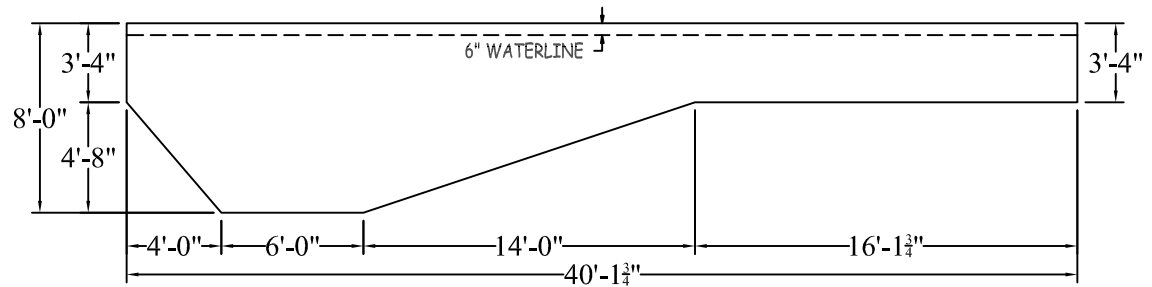
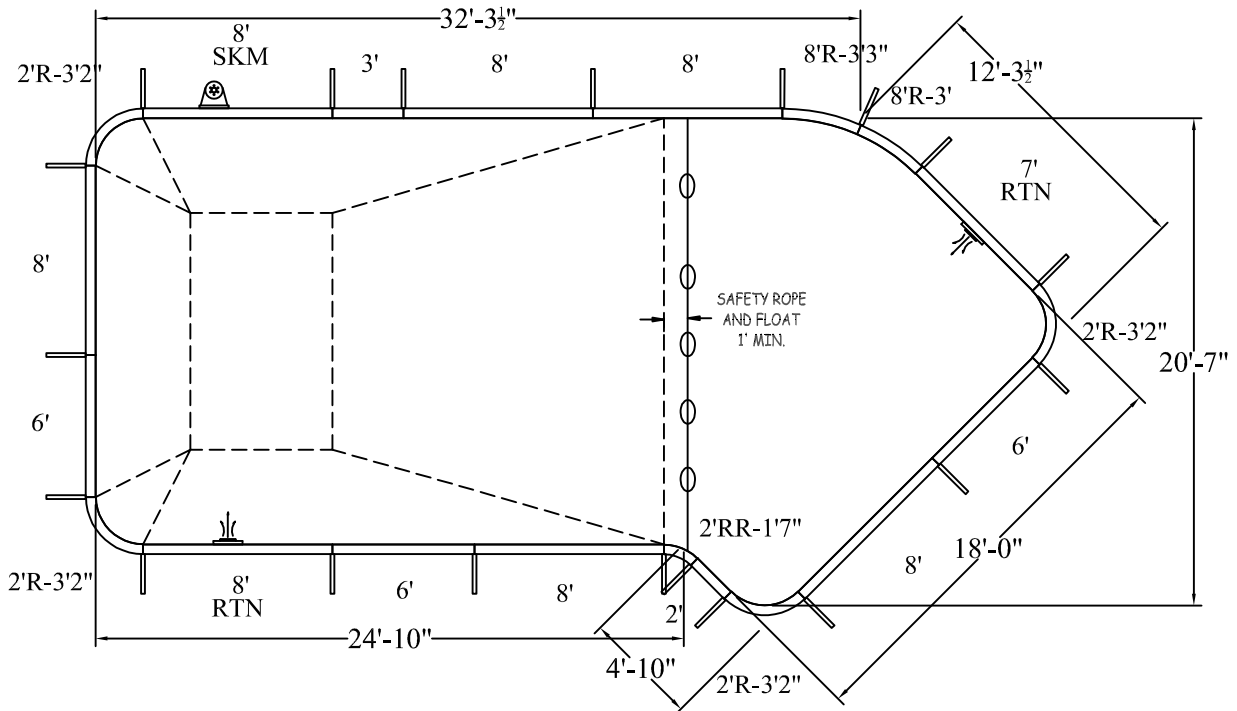
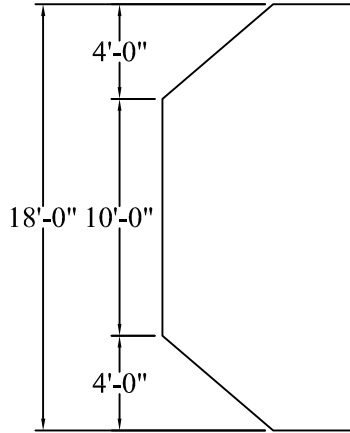
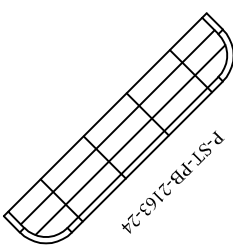
STEP OPTION 1



STEP OPTION 2



STEP OPTION 3



LAZY L 2FT RAD

18-0 X 20-7 X 40-2 LEFT

DATE: 01/01/2020

REVISION:

SCALE: N.T.S.

APPROX. WATER VOLUME: 82200 LITRES

PERIMETER: 106'-6" LIN.FT.

SURFACE (ft²): 663.5243

LINER (ft²): 668.2500

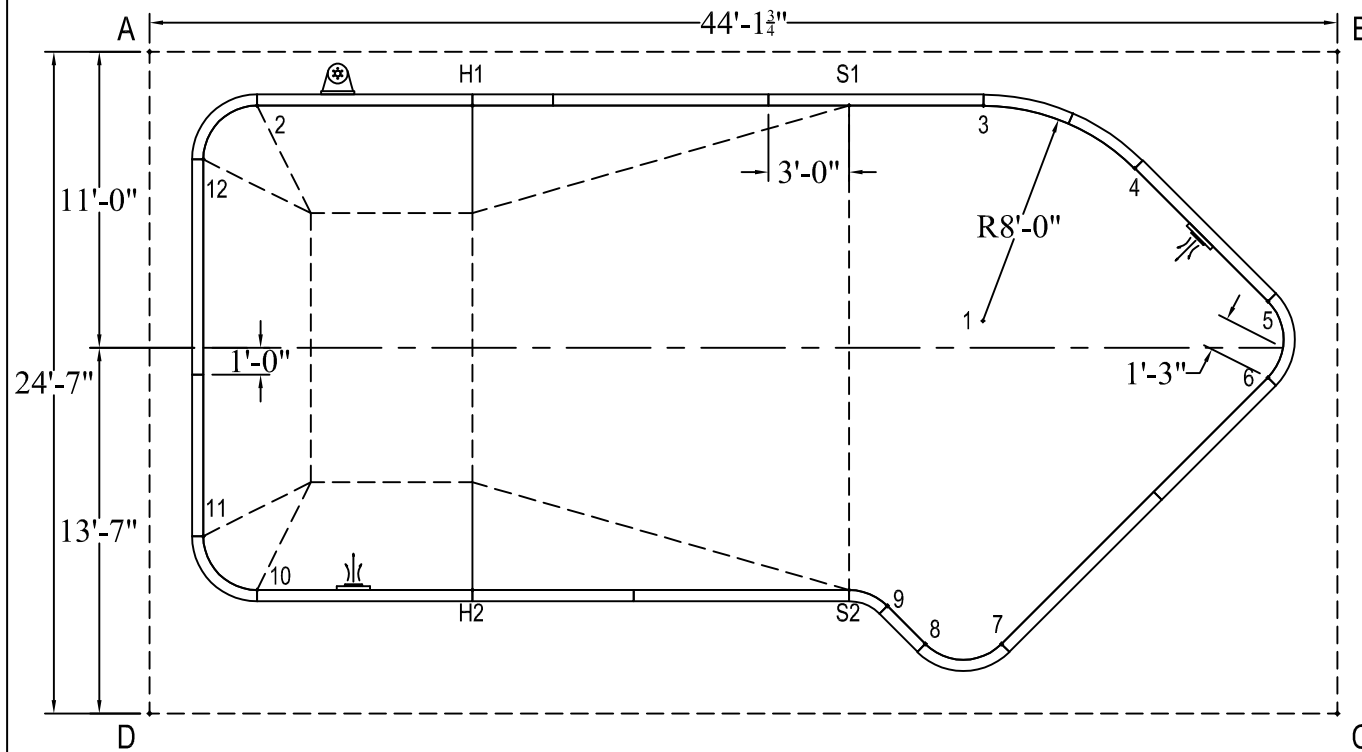
COVER (ft²): 952.2574 Standard

ATLAS SERIES

WARNING
 SWIMMING POOLS ARE DANGEROUS WHEN USED IMPROPERLY. CONSULT YOUR DEALER FOR INFORMATION ON THE SAFE USE OF SWIMMING POOLS. IT IS THE RESPONSIBILITY OF TOWN OFFICIALS, BUILDERS AND HOME OWNERS TO FOLLOW ALL SAFETY RECOMMENDATIONS OF LOCAL ORDINANCES AND EQUIPMENT MANUFACTURERS. FOR DIVING & SLIDING EQUIPMENT REFER TO THE MANUFACTURER'S INSTRUCTIONS TO CORRECTLY POSITION & INSTALL EQUIPMENT.

	A	B	C	D		A	B	C	D
1	32'-6 1/2"	16'-6 1/2"	19'-8"	34'-3"	10	20'-4 3/4"	44'-10 1/4"	40'-5"	6'-1"
2	4'-5 3/4"	40'-2 1/2"	46'-0 3/4"	22'-11 1/4"	11	18'-1 1/4"	45'-10"	42'-8"	6'-10 3/4"
3	31'-0 3/4"	13'-3 3/4"	26'-1 3/4"	38'-4 1/4"	12	4'-5 3/4"	42'-4"	46'-11"	20'-8 1/4"
4	36'-10 1/2"	8'-8 1/4"	21'-7 1/2"	41'-10 1/4"	S1	26'-1"	18'-3 1/4"	28'-11 3/4"	34'-5 1/4"
5	42'-7"	9'-7 1/2"	15'-6 1/4"	44'-3 1/2"	S2	32'-9 3/4"	27'-0"	18'-8 3/4"	26'-4 3/4"
6	43'-3 1/2"	12'-4 1/2"	12'-9"	43'-4 3/4"	H1	12'-2"	32'-2 1/2"	39'-3 1/2"	25'-7"
7	38'-6 3/4"	25'-3 1/2"	12'-9"	31'-9 1/4"	H2	23'-4"	37'-10 1/2"	32'-5 3/4"	12'-10 1/4"
8	36'-3 1/4"	26'-9 3/4"	15'-6 1/2"	28'-11 1/2"	A	-	44'-1 3/4"	50'-6 1/2"	24'-7"
9	34'-3 1/2"	26'-6 1/4"	17'-2 1/2"	27'-8 1/2"					

DIAGONALS		3 to 12	29'-0 3/4"
1 to 2	28'-1 3/4"	4 to 5	7'-0"
1 to 3	8'-0"	4 to 6	9'-2 3/4"
1 to 4	8'-0"	4 to 7	18'-4 1/4"
1 to 5	10'-7 1/2"	4 to 8	19'-3 3/4"
1 to 6	10'-9 1/2"	4 to 9	18'-8 1/4"
1 to 7	12'-0 1/4"	4 to 10	36'-2 1/4"
1 to 8	12'-2 1/4"	4 to 11	37'-2 3/4"
1 to 9	11'-2"	4 to 12	34'-7 1/2"
1 to 10	28'-9 1/4"	5 to 6	2'-10"
1 to 11	30'-0 3/4"	5 to 7	16'-1 1/2"
1 to 12	29'-7"	5 to 8	18'-0"
2 to 3	27'-0"	5 to 9	18'-1 1/4"
2 to 4	32'-8 1/2"	5 to 10	39'-0 3/4"
2 to 5	38'-3 1/4"	5 to 11	40'-6 1/4"
2 to 6	38'-10 3/4"	5 to 12	39'-11"
2 to 7	34'-1 3/4"	6 to 7	14'-0"
2 to 8	31'-10 3/4"	6 to 8	16'-1 1/2"
2 to 9	29'-10 3/4"	6 to 9	16'-6"
2 to 10	18'-0"	6 to 10	38'-4 3/4"
2 to 11	16'-1 1/2"	6 to 11	40'-0"
2 to 12	2'-10"	6 to 12	40'-4 3/4"
3 to 4	6'-1"	7 to 8	2'-10"
3 to 5	12'-10"	7 to 9	4'-5 3/4"
3 to 6	14'-7 1/2"	7 to 10	27'-8 3/4"
3 to 7	20'-0 1/4"	7 to 11	29'-11 1/4"
3 to 8	20'-1 1/2"	7 to 12	34'-8 1/2"
3 to 9	18'-11 1/4"	8 to 9	2'-0"
3 to 10	32'-5 1/2"	8 to 10	24'-11"
3 to 11	33'-1 1/2"	8 to 11	27'-1 1/2"
		8 to 12	32'-3 3/4"
		9 to 10	23'-5 1/4"
		9 to 11	25'-6 3/4"
		9 to 12	30'-4 1/4"
		10 to 11	2'-10"
		10 to 12	16'-1 1/2"
		11 to 12	14'-0"
		S1 to S2	18'-0"
		S1 to H1	14'-0"
		S1 to H2	22'-9 3/4"
		S2 to H1	22'-9 3/4"
		S2 to H2	14'-0"
		H1 to H2	18'-0"



LAZY L 2FT RAD

18-0 X 20-7 X 40-2 LEFT

DATE:01/01/2020

ATLAS SERIES