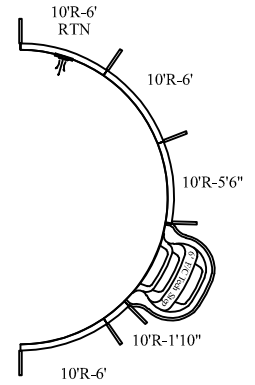
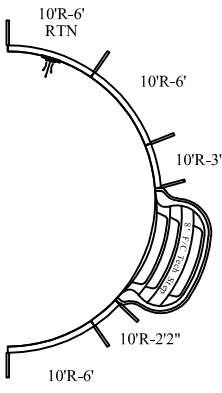


STEP OPTIONS

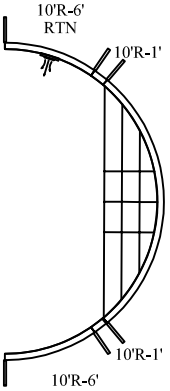
STEP OPTION 1



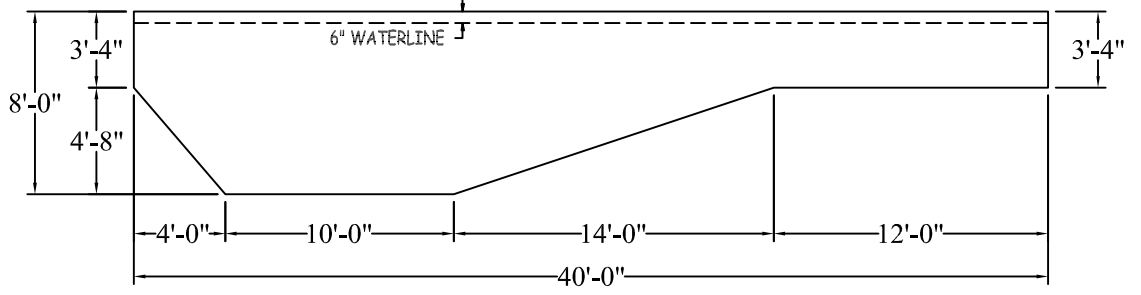
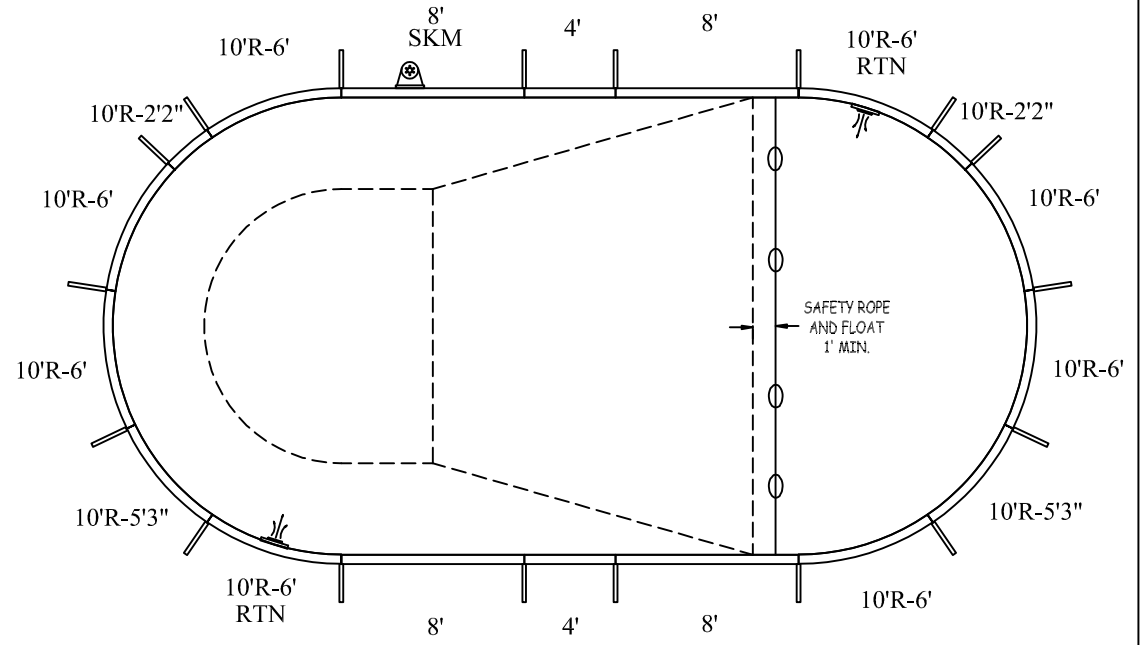
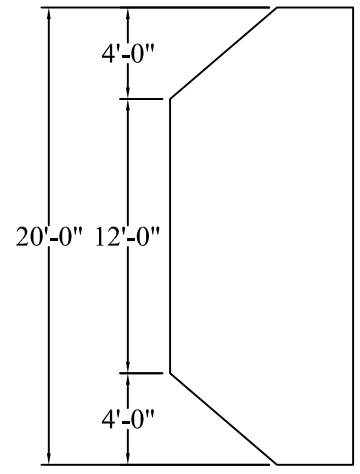
STEP OPTION 2



STEP OPTION 3



P-ST-PP-1003R



OVAL

20-0 X 40-0

DATE: 01/01/2020

REVISION:

SCALE: N.T.S.

APPROX. WATER VOLUME: 94 800 LITRES

PERIMETER: 102'-10" LIN.FT.

SURFACE (ft²): 714.1592

LINER (ft²): 800.0000

COVER (ft²): 924.0000 Standard

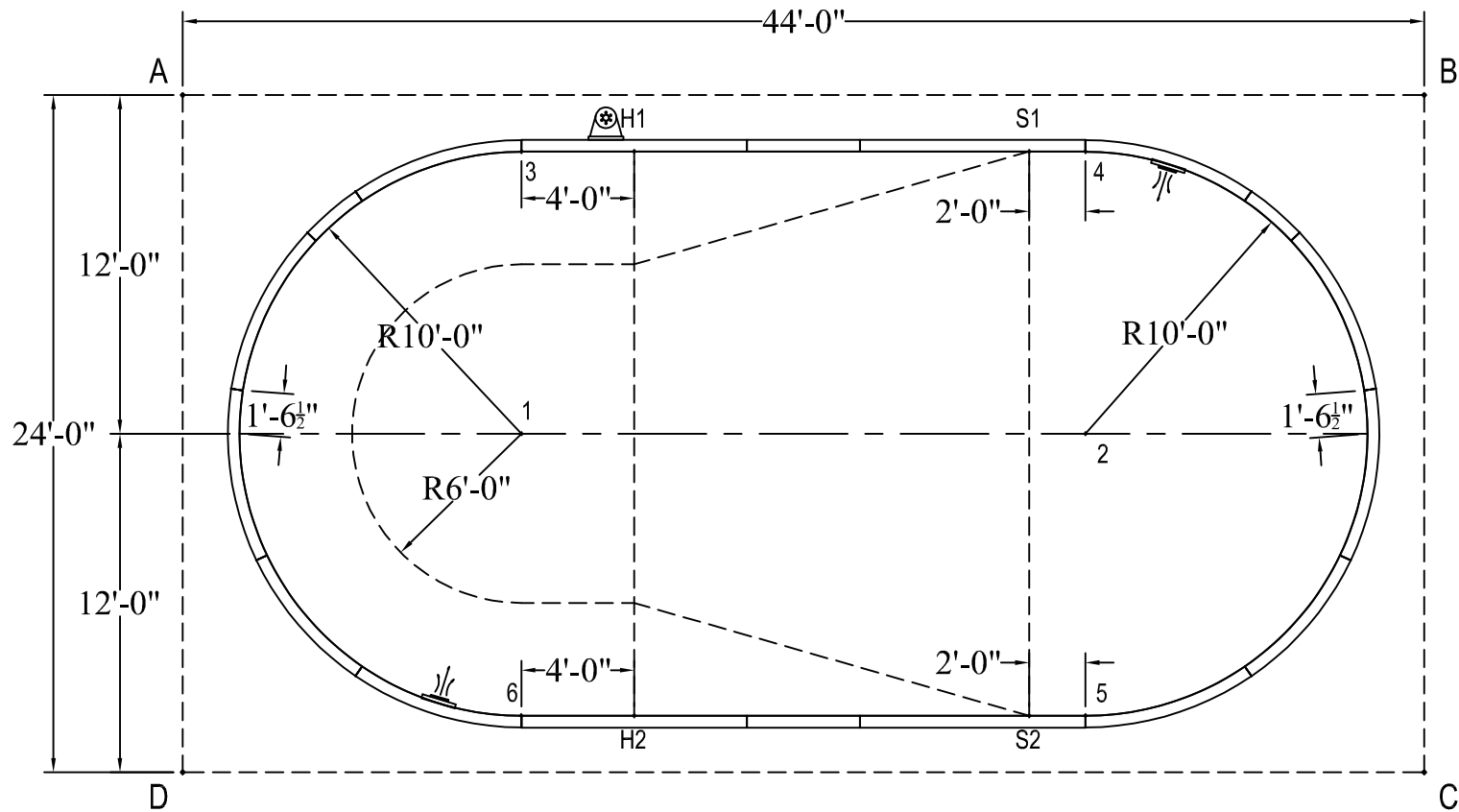
ATLAS SERIES

WARNING

SWIMMING POOLS ARE DANGEROUS WHEN USED IMPROPERLY. CONSULT YOUR DEALER FOR INFORMATION ON THE SAFE USE OF SWIMMING POOLS. IT IS THE RESPONSIBILITY OF TOWN OFFICIALS, BUILDERS AND HOME OWNERS TO FOLLOW ALL SAFETY RECOMMENDATIONS OF LOCAL ORDINANCES AND EQUIPMENT MANUFACTURERS. FOR DIVING & SLIDING EQUIPMENT REFER TO THE MANUFACTURER'S INSTRUCTIONS TO CORRECTLY POSITION & INSTALL EQUIPMENT.

	A	B	C	D
1	15'-6 3/4"	31'-0"	31'-0"	15'-6 3/4"
2	31'-0"	15'-6 3/4"	15'-6 3/4"	31'-0"
3	11'-2"	29'-0 3/4"	35'-2 1/2"	22'-9 3/4"
4	29'-0 3/4"	11'-2"	22'-9 3/4"	35'-2 1/2"
5	35'-2 1/2"	22'-9 3/4"	11'-2"	29'-0 3/4"
6	22'-9 3/4"	35'-2 1/2"	29'-0 3/4"	11'-2"
S1	26'-1"	14'-1 1/2"	24'-4 3/4"	32'-9 3/4"
S2	32'-9 3/4"	24'-4 3/4"	14'-1 1/2"	26'-1"
H1	12'-2"	28'-0 1/2"	34'-4 3/4"	23'-4"
H2	23'-4"	34'-4 3/4"	28'-0 1/2"	12'-2"
A	-	39'-11 3/4"	45'-7 1/2"	22'-0"

DIAGONALS	
1 to 2	17'-11 3/4"
1 to 3	9'-0"
1 to 4	20'-1 1/4"
1 to 5	20'-1 1/4"
1 to 6	9'-0"
2 to 3	20'-1 1/4"
2 to 4	9'-0"
2 to 5	9'-0"
2 to 6	20'-1 1/4"
3 to 4	18'-0"
3 to 5	25'-5 1/2"
3 to 6	18'-0"
4 to 5	18'-0"
4 to 6	25'-5 1/2"
5 to 6	18'-0"
S1 to S2	18'-0"
S1 to H1	14'-0"
S1 to H2	22'-9 3/4"
S2 to H1	22'-9 3/4"
S2 to H2	14'-0"
H1 to H2	18'-0"



OVAL

20-0 X 40-0

DATE: 01/01/2020

ATLAS SERIES