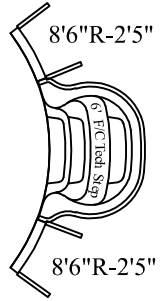
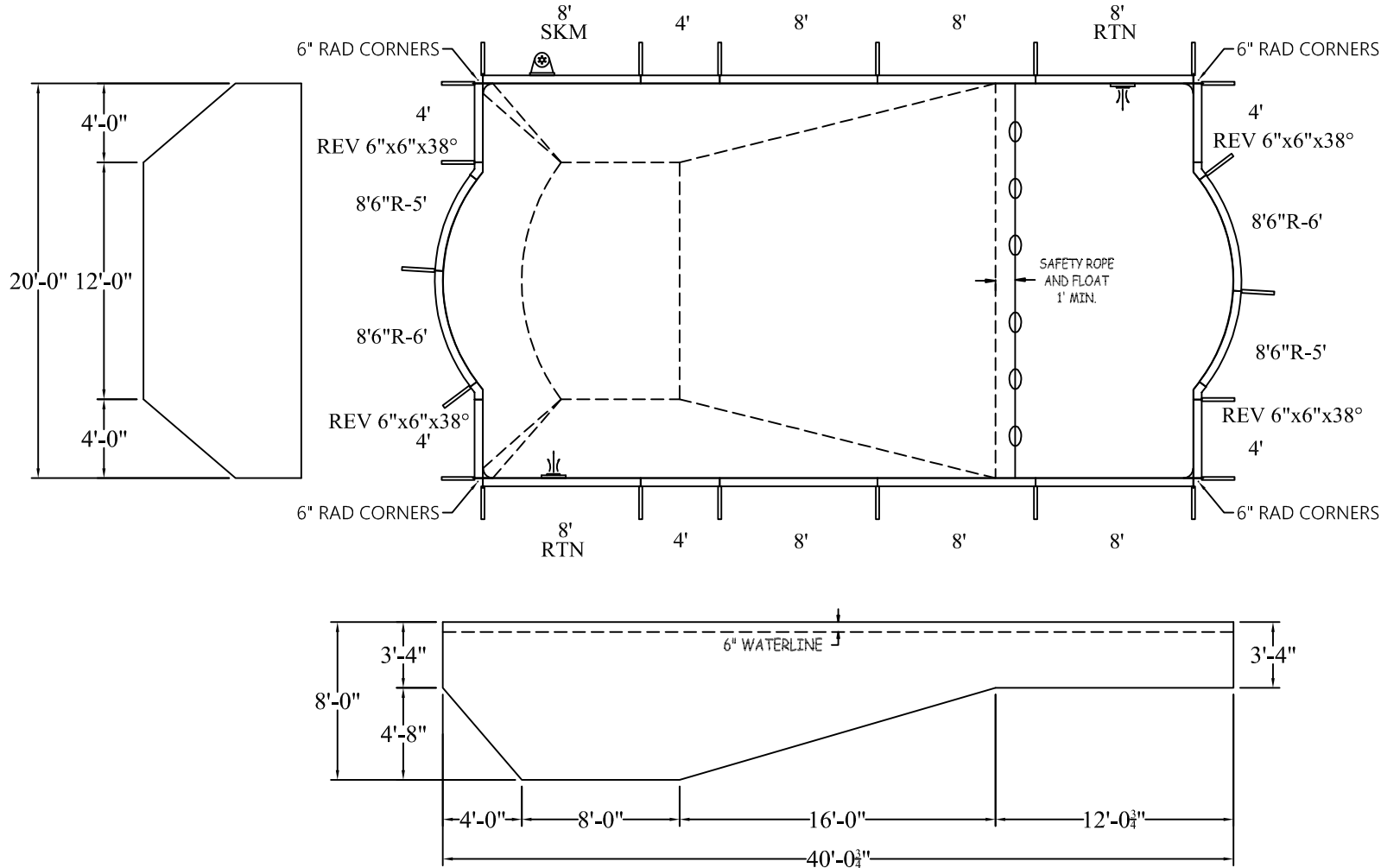
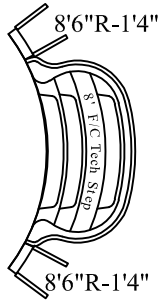


STEP OPTIONS

STEP OPTION 1



STEP OPTION 2



ROMAN 6 IN RAD

DATE: 01/01/2019

PERIMETER: 114'-0" LIN.FT.

ATLAS SERIES

REVISION:

SURFACE (ft²): 750.6568

SCALE: N.T.S.

LINER (ft²): 801.2480

APPROX. WATER VOLUME: 93 300 LITRES

COVER (ft²): 925.8260 Standard

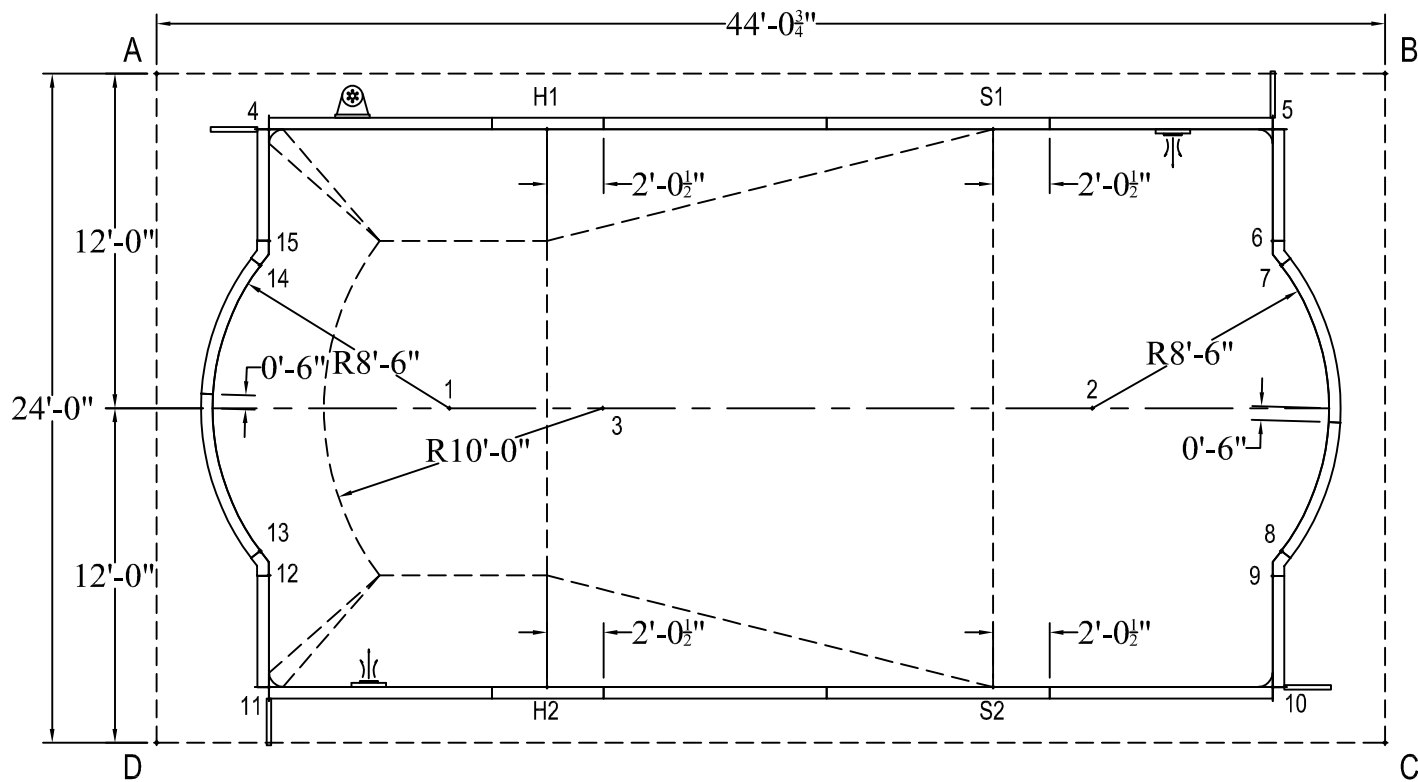
WARNING

SWIMMING POOLS ARE DANGEROUS WHEN USED IMPROPERLY. CONSULT YOUR DEALER FOR INFORMATION ON THE SAFE USE OF SWIMMING POOLS. IT IS THE RESPONSIBILITY OF TOWN OFFICIALS, BUILDERS AND HOME OWNERS TO FOLLOW ALL SAFETY RECOMMENDATIONS OF LOCAL ORDINANCES AND EQUIPMENT MANUFACTURERS FOR DIVING & SLIDING EQUIPMENT REFER TO THE MANUFACTURER'S INSTRUCTIONS TO CORRECTLY POSITION & INSTALL EQUIPMENT.

20-0 X 40-1

	A	B	C	D						DIAGONALS					
1	15'-11 1/4"	35'-7 3/4"	35'-7 3/4"	15'-11 1/4"	11	22'-4 1/2"	45'-8 1/4"	40'-1"	4'-6"	1 to 2	23'-0 3/4"	2 to 3	17'-6 3/4"	6 to 9	12'-0 1/4"
2	35'-7 3/4"	15'-11 1/4"	15'-11 1/4"	35'-7 3/4"	12	18'-5 1/2"	43'-10 3/4"	40'-5 3/4"	7'-2 1/2"	1 to 3	5'-6"	2 to 4	31'-2 1/4"	6 to 10	16'-0 1/4"
3	20'-0"	30'-6 1/4"	30'-6 1/4"	20'-0"	13	17'-6 1/4"	43'-10"	40'-11"	7'-9 3/4"	1 to 4	11'-11"	2 to 5	11'-11"	6 to 11	39'-4 3/4"
4	4'-6"	40'-1"	45'-8 1/4"	22'-4 1/2"	14	7'-9 3/4"	40'-11"	43'-10"	17'-6 1/4"	1 to 5	31'-2 1/4"	2 to 6	8'-10"	6 to 12	37'-11 1/2"
5	40'-1"	4'-6"	22'-4 1/2"	45'-8 1/4"	15	7'-2 1/2"	40'-5 3/4"	43'-10 3/4"	18'-5 1/2"	1 to 6	30'-1 3/4"	2 to 7	8'-6"	6 to 14	36'-4"
6	40'-5 3/4"	7'-2 1/2"	18'-5 1/2"	43'-10 3/4"	S1	30'-0 3/4"	14'-2 1/2"	26'-1 1/4"	37'-2 1/2"	1 to 7	30'-3 1/4"	2 to 8	8'-6"	6 to 15	36'-0"
7	40'-11"	7'-9 3/4"	17'-6 1/4"	43'-10"	S2	37'-2 1/2"	26'-1 1/4"	14'-2 1/2"	30'-0 3/4"	1 to 8	30'-3 1/4"	2 to 9	8'-10"	7 to 8	10'-3"
8	43'-10"	17'-6 1/4"	7'-9 3/4"	40'-11"	H1	14'-1 3/4"	30'-1 1/2"	37'-3"	26'-1"	1 to 9	30'-1 3/4"	2 to 10	11'-11"	7 to 9	11'-1 3/4"
9	43'-10 3/4"	18'-5 1/2"	7'-2 1/2"	40'-5 3/4"	H2	26'-1"	37'-3"	30'-1 1/2"	14'-1 3/4"	1 to 10	31'-2 1/4"	2 to 11	31'-2 1/4"	7 to 10	15'-1 1/2"
10	45'-8 1/4"	22'-4 1/2"	4'-6"	40'-1"	A	-	44'-0 3/4"	50'-2"	24'-0"	1 to 11	11'-11"	2 to 12	30'-1 3/4"	7 to 11	39'-4"

1 to 12	8'-10"	2 to 13	30'-3 1/4"	7 to 12	37'-11 3/4"
1 to 13	8'-6"	2 to 14	30'-3 1/4"	7 to 13	38'-0 1/2"
1 to 14	8'-6"	2 to 15	30'-1 3/4"	7 to 14	36'-7 1/2"
3 to 4	15'-7 1/4"	7 to 15	36'-4"		
3 to 5	26'-0 1/4"	8 to 9	0'-11 1/4"		
3 to 6	24'-9 1/4"	8 to 10	4'-10 3/4"		
3 to 7	24'-10 1/2"	8 to 11	36'-7 3/4"		
3 to 8	24'-10 1/2"	8 to 12	36'-4"		
3 to 9	24'-9 1/4"	8 to 13	36'-7 1/2"		
3 to 10	26'-0 1/4"	8 to 14	38'-0 1/2"		
3 to 11	15'-7 1/4"	8 to 15	37'-11 3/4"		
3 to 12	13'-4 3/4"	9 to 10	3'-11 3/4"		
3 to 13	13'-3 3/4"	9 to 11	36'-2 3/4"		
3 to 14	13'-3 3/4"	9 to 12	36'-0"		
3 to 15	13'-4 3/4"	9 to 13	36'-4"		
4 to 5	36'-0"	9 to 14	37'-11 3/4"		
4 to 6	36'-2 3/4"	9 to 15	37'-11 1/2"		
4 to 7	36'-7 3/4"	10 to 11	36'-0"		
4 to 8	39'-4"	10 to 12	36'-2 3/4"		
4 to 9	39'-4 3/4"	10 to 13	36'-7 3/4"		
4 to 10	41'-2 1/4"	10 to 14	39'-4"		
4 to 11	20'-0"	10 to 15	39'-4 3/4"		
4 to 12	16'-0 1/4"	11 to 12	3'-11 3/4"		
4 to 13	15'-1 1/2"	11 to 13	4'-10 3/4"		
4 to 14	4'-10 3/4"	11 to 14	15'-1 1/2"		
4 to 15	3'-11 3/4"	11 to 15	16'-0 1/4"		
5 to 6	3'-11 3/4"	12 to 13	0'-11 1/4"		
5 to 7	4'-10 3/4"	12 to 14	11'-1 3/4"		
5 to 8	15'-1 1/2"	12 to 15	12'-0 1/4"		
5 to 9	16'-0 1/4"	13 to 14	10'-3"		
5 to 10	20'-0"	13 to 15	11'-1 3/4"		
5 to 11	41'-2 1/4"	14 to 15	0'-11 1/4"		
5 to 12	39'-4 3/4"	S1 to S2	20'-0"		
5 to 13	39'-4"	S1 to H1	16'-0"		
5 to 14	36'-7 3/4"	S1 to H2	25'-7 1/4"		
5 to 15	36'-2 3/4"	S2 to H1	25'-7 1/4"		
6 to 7	0'-11 1/4"	S2 to H2	16'-0"		
6 to 8	11'-1 3/4"	H1 to H2	20'-0"		



ROMAN 6 IN RAD

20-0 X 40-1

DATE:01/01/2019

ATLAS SERIES